

English



Mitsukejima Island (Suzu City)

KAGA・NOTO

Convention Facility Guide



Otabi Festival (Komatsu City)

Kanazawa Convention Bureau
Ishikawa Convention Promotion Council

KAGA · NOTO

Convention Facility Map









Noto

Kaga

Kanazawa



-  Hokuriku Shinkansen
-  JR Line
-  Other railroad
-  Expressway
-  Main highway
-  National highway



| INDEX |

Kaga

Nonoichi City	1	Nonoichi City Hall “forte”	2
Hakusan City	2	Grand Hotel Hakusan	3
	3	Tsurugi Sogo Bunka Kaikan “Crane”	4
	4	Matto Bunka Kaikan “Pino”	5
Nomi City	5	Ishikawa High-Tech Conference Center	6
	6	Tatsunokuchi Onsen Tagawa Ryusenkaku	7
	7	Terai District Public Hall	8
	8	Neagari Synthesis Cultural Center “Tanto”	9
Komatsu City	10	Komatsu URARA Theater	10
	11	Komatsu City Public Hall	11
	12	Komatsu Civic Center	12
	13	Komatsu Chamber of Commerce and Industry Small and Medium Enterprises Seminar House	13
	14	Komatsu Dome	14
	15	Komatsu Hokuden Hall (temporary name)	15
	16	Science Hills Komatsu	16
	17	Hotel Binario Komatsu Centre	17
	18	Route-Inn Grantia Komatsu Airport	18
Kaga City	21	Municipal Lyceum in Kaga “Come On a Hall”	19
	20	Katayamazu Onsen Kasuikyo	20
	21	Hatori	21
	22	Hotel Arrowle	22
	23	Banshokaku	23
	24	Kaga Hyakumangoku	24
	25	Yamanaka Onsen Bunka Kaikan	25
	26	Yamanaka-za	26
	27	Yunokuni Tensyo	27
	28	Rurikoh	28

Noto

Suzu City	29	Suzu Beach Hotel	29
	30	La Porte Suzu	30
Noto Town	31	Concert Noto	31
Wajima City	32	Wajima City Culture Hall	32
Anamizu Town	33	Castle Manai	33
	34	Noto Fureai Culture Center	34
Nanao City	35	Aenokaze	35
	36	Kagaya	36
	37	Nanao Sunlife Plaza	37
	38	Nanao Nakajima Cultural Center, Noto Engekido Theater	38
	39	Notoraku	39
	40	Forum Nanao	40
	41	Wakura Onsen Omatsuri Hall	41
Nakanoto Town	42	Traditional house, Mioya-no-sato	42
Shika Town	43	Ikoi no Mura Noto Hanto	43
	44	Shikamachi Togi Regional Development Center	44
	45	Royal Hotel Noto	45
Hakui City	46	Space Science Museum “Cosmo Isle Hakui”	46
Kahoku City	47	AMANDAN VILLA	47
	48	Ishikawa NISHIDA KITARO Museum of Philosophy	48
Tsubata Town	49	Tsubata Town Cultural Hall “CYGNUS”	49
Uchinada Town	50	Uchinada Town Cultural Hall	50

Nonoichi City Hall "forte"

5-4-1 Hon-machi, Nonoichi 921-8815

Tel: 076-248-8000

Fax: 076-246-2391

URL: <http://forte.nono1.jp>

E-mail: info@forte.nono1.jp



Large hall



■ Number of seats

804 seats (Large hall)



■ Traffic access

30 min by bus from JR Kanazawa Station
(Get off at Taheiji and walk for 2 min.)
20 min by taxi from JR Kanazawa Station



■ Hours

9:00am~10:00pm
Closed: 1st and 3rd Wed., year-end and
New Year's holidays (Dec. 28~Jan. 3)

■ Date to start accepting reservation

Beginning of the month one year before the date of
use



■ Accommodation

None



■ Restaurants/Cafés

• Coffee shop "forte HIMAWARI": 20 seats



■ Parking

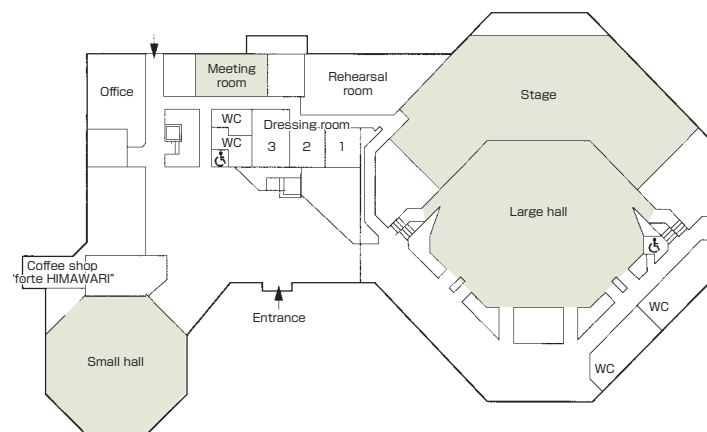
250 vehicles (free)



■ Remarks

Dressing room: 3, Rehearsal room: 1

Floor plan



■ Convention site

Site name	Floor	Area(m ²)	Width × Depth (m) (m)	Ceiling height(m)	Capacity (persons)					Remarks
					Fixed seats	School	Theater	Seated	Buffet	
Large hall	1	700	—	—	804	—	—	—	—	1F: 682 seats, 2F: 122 seats
Small hall	1	326	—	5.3	—	150	300	—	—	
Meeting room	1	57	10.0 × 5.2	2.7	—	20	—	—	—	
Culture room	2	121	15.0 × 7.5	2.7	—	48	—	—	—	
Lecture room	2	56	7.5 × 7.5	2.7	—	20	—	—	—	
Japanese-style room	2	36-tatami-mat	10.2 × 5.0	2.5	—	—	—	—	—	Two 18-tatami-mat rooms adjacent to a tea-ceremony room (8-tatami-mat)
Seminar room	2	60	7.5 × 8.0	2.7	—	25	—	—	—	
Conference room	2	36	3.8 × 8.0	2.7	—	12	—	—	—	

Width × Depth and the floor area may not match depending on the shape of the room.

Grand Hotel Hakusan

152-7 Nishishin-machi, Hakusan 924-0871
 Tel: 076-274-0001 Fax: 076-274-3300
 URL: <http://www.grandhotel-hakusan.jp/>
 E-mail: info@ghaku.jp



Large banquet room "Glory Hall"



■ Number of seats
300 seats (Large banquet room "Glory Hall")



■ Traffic access
 3-min walk from JR Matto Station
 10 min by train from JR Kanazawa Station



■ Hours
 8:00am~10:00pm

■ Date to start accepting reservation
 At any time



■ Accommodation
 • Single room
 Main building: 37
 Annex: 50
 • Twin room: 20
 • Double room: 10
 • Suite: 1



■ Restaurants/Cafés
 • Japanese restaurant "Chiyo": 80 seats



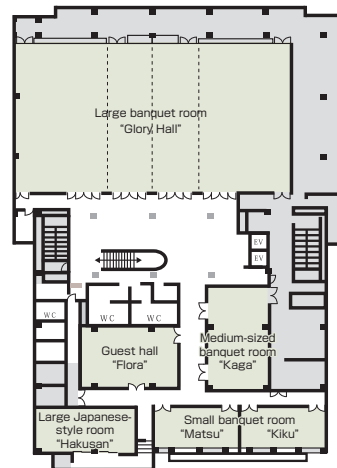
■ Parking
100 vehicles (500 yen/night if lodging)
 Other affiliated parking lots are available.
 * Free with conditions



■ Remarks
 • Large bathroom (Lodgers are free)
 • Coin laundry (pay)

Floor plan

■ 2F



■ Convention site

Site name	Floor	Area(m ²)	Width × Depth (m) (m)	Ceiling height(m)	Capacity (persons)				Remarks	
					Fixed seats	School	Theater	Seated		Buffet
Large banquet room All	All	576		5.8	—	300	420	300	500	
	2/3	385		5.8	—	200	300	180	300	
	1/2	284		5.8	—	140	200	140	200	
	1/3	191		5.8	—	90	100	80	80	
Medium-sized banquet room "Kaga"	2	94		3.0	—	40	60	35	50	
Guest hall "Flora"	2	92		3.0	—	40	60	35	50	
Large Japanese-style room "Hakusan"	2	58		2.7	—	—	—	26	—	
Small banquet room "Matsu", "Kiku"	2	49		3.0	—	20	30	20	20	

Width × Depth and the floor area may not match depending on the shape of the room.

Tsurugi Sogo Bunka Kaikan "Crane"

(Tsurugi Cultural Complex)

77 Shichihara-machi, Hakusan 920-2143

Tel: 076-273-8700

Fax: 076-273-8701

E-mail: cranehall@city.hakusan.ishikawa.jp



Culture hall



■ Number of seats

805 seats (Culture hall)
(General seat: 798, Wheelchair space: 7)



■ Traffic access

50 min by bus from JR Kanazawa Station for Shimomorishima (Get off at Shichihara and walk for 2 min.)
Hokuriku Railroad Ishikawa Line (Get off at Dohoji and walk for 30 min.)



■ Hours

9:00am~10:00pm
Closed: Monday (the following weekday when Monday is a holiday), Year-end and New Year's holidays (Dec. 27~Jan. 4)

■ Date to start accepting reservation

Culture hall and related facilities: one year before
Lifelong learning area (Workshop rooms): 3 months before



■ Accommodation

None



■ Restaurants/Cafés

• Coffee shop "Gion": 35 seats



■ Parking

400 vehicles (free)

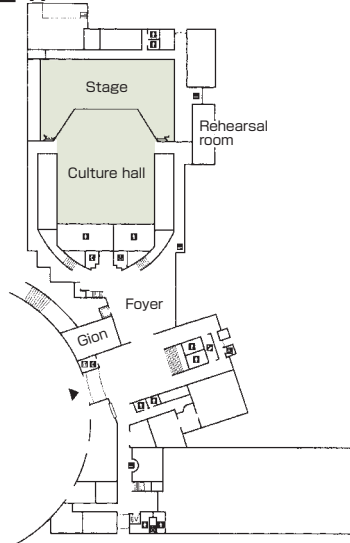


■ Remarks

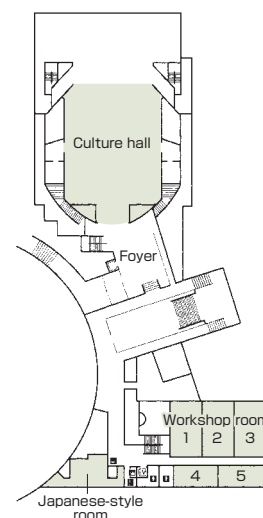
None

Floor plan

■ 1F



■ 2F



■ Convention site

Site name	Floor	Area(m ²)	Width × Depth (m)	Ceiling height(m)	Capacity (persons)					Remarks
					Fixed seats	School	Theater	Seated	Buffet	
Culture hall	1	—	—	—	805	—	—	—	—	Wheelchair space: 7
Workshop room1	2	100	7.5 × 13.0	4	—	60	—	—	—	Workshop room 1 ~ 3 can be integrated into one space.
Workshop room2	2	100	7.5 × 13.0	4	—	60	—	—	—	
Workshop room3	2	100	7.5 × 13.0	4	—	60	—	—	—	
Workshop room4	2	55	11.0 × 5.0	4	—	30	—	—	—	
Workshop room5	2	55	11.0 × 5.0	4	20	—	—	—	—	
Japanese-style room	2	25-tatami-mat	9.0 × 5.0	2	—	—	—	—	—	

Width × Depth and the floor area may not match depending on the shape of the room.

Matto Bunka Kaikan "Pino"

(Matto Cultural Hall)

2 Furushiro-machi, Hakusan 924-0872

Tel: 076-276-5611

Fax: 076-276-5612

E-mail: hcsk-bunka@city.hakusan.ishikawa.jp



Large hall



■ Number of seats

1,186 seats (Large hall)



■ Traffic access

5-min walk from JR Matto Station



■ Hours

9:00am~10:00pm

Closed: Monday (the following weekday when Monday is a holiday), year-end and New Year's holidays (Dec. 29~Jan. 3)

■ Date to start accepting reservation

Beginning of the month one year before the date of use



■ Accommodation

None



■ Restaurants/Cafés

Coffee shop "Chacha": 20 seats



■ Parking

65 vehicles (free)

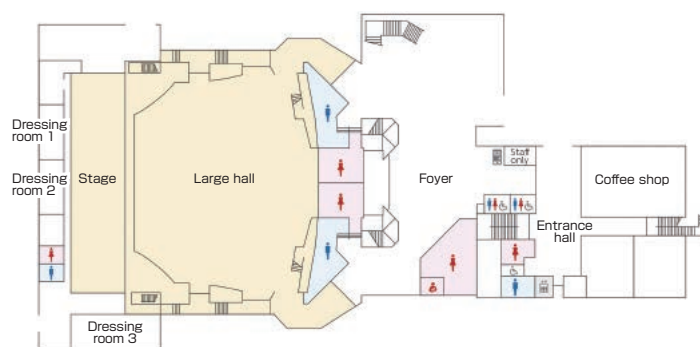


■ Remarks

None

Floor plan

■ 1F



■ Convention site

Site name	Floor	Area(m ²)	Width × Depth (m)	Ceiling height(m)	Capacity (persons)					Remarks
					Fixed seats	School	Theater	Seated	Buffet	
Large hall	1・2	—	—	—	1,186	—	—	—	—	1F: 672 seats, 2F: 514 seats
Workshop room 301	3	50	6.3 × 8.0	2.4	—	30	—	—	—	
Workshop room 302	3	50	6.3 × 8.0	2.4	—	30	—	—	—	
Workshop room 303	3	50	6.3 × 8.0	2.4	—	30	—	—	—	
Workshop room 304	3	88	12.6 × 7.0	2.4	—	45	—	—	—	
Workshop room 401	4	151	18.9 × 8.0	2.4	—	110	—	—	—	
Multipurpose room	2	190	18.0 × 11.4	3.3	—	90	—	—	—	

Width × Depth and the floor area may not match depending on the shape of the room.

Ishikawa High-Tech Conference Center

2-1 Asahidai, Nomi 923-1211
 Tel: 0761-51-0106
 Fax: 0761-51-0161
 URL: www.isico.or.jp/isp
 E-mail: office@ishikawa-sp.com



Conference hall



■ Number of seats
220 seats (Conference hall)



■ Traffic access
 <From Komatsu Airport>
 ・ 30 min by taxi
 * People related to JAIST can take a shuttle bus at Komatsu Station by reservation.
 <From Kanazawa>
 ・ Take a train at JR Kanazawa Station and get off at Nishi-Kanazawa Station. Change trains to the Ishikawa Line of Hokuriku Railroad, get off at Tsurugi Station and take a taxi (10 min ride).



■ Hours
 9:00am~9:00pm
 Closed: National holidays, year-end and New Year's holidays (Dec. 29~Jan. 3)

■ Date to start accepting reservation
 One year before the date of use



■ Accommodation
 ・ Single room: 4
 ・ Twin room: 4



■ Restaurants/Cafés
 None



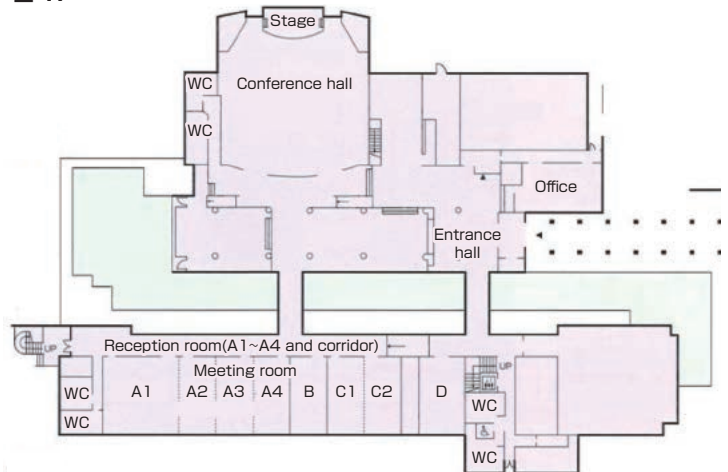
■ Parking
 100 vehicles (free)



■ Remarks
 Tennis court: 2
 Wireless LAN accessible

Floor plan

■ 1F



■ Convention site

Site name	Floor	Area(m ²)	Width × Depth (m)	Ceiling height(m)	Capacity (persons)					Remarks
					Fixed seats	School	Theater	Seated	Buffet	
Conference hall	1	433			220	-				LC projector, acoustic system
Meeting room A1	1	93				36				LC projector, acoustic system, screen, movable stage, gold-leafed folding screen ・ A1 ~ A4 can be integrated. ・ C1 ~ C2 can be integrated.
Meeting room A2	1	47				12				
Meeting room A3	1	47				12				
Meeting room A4	1	47				12				
Meeting room B	1	47				12				
Meeting room C1	1	47				12				
Meeting room C2	1	47				12				
Meeting room D	1	56			8	-				
Reception room (A1 ~ A4 and corridor)	1	304							150	

Width × Depth and the floor area may not match depending on the shape of the room.

Terai District Public Hall

Yo-47 Terai-machi, Nomi 923-1121

Tel: 0761-57-0030

Fax: 0761-57-3709



Large hall



■ Number of seats

500 seats (Large hall)



■ Traffic access

1 hr by bus from JR Kanazawa Station
(Get off at Nomi Shiyakusho Terai Bunshitsu-mae and walk for one min.)



■ Hours

9:00am~9:30pm
Closed: Monday, year-end and New Year's holidays
(Dec. 28~Jan. 3)

■ Date to start accepting reservation

At any time



■ Accommodation

None



■ Restaurants/Cafés

• Coffee shop "Coco": 17 seats



■ Parking

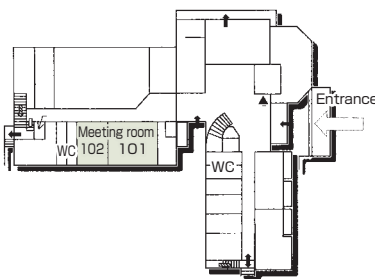
245 vehicles (free)
The 133 vehicle parking lot is shared with Terai Gymnasium.
The 89 vehicle parking lot is not used during the weekday daytime.



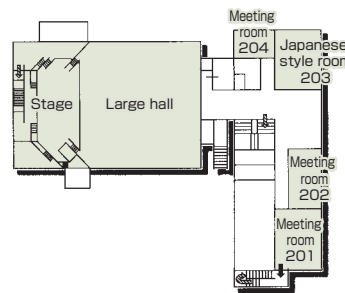
■ Remarks

None

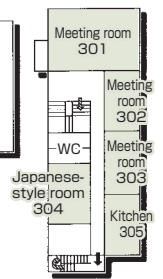
■ 1F



■ 2F



■ 3F



Floor plan

■ Convention site

Site name	Floor	Area(m ²)	Width × Depth (m)	Ceiling height(m)	Capacity (persons)					Remarks
					Fixed seats	School	Theater	Seated	Buffet	
Meeting room 101	1	83.0			-	36	-	-	-	
Meeting room 102	1	49.8			-	24	-	-	-	
Meeting room 201	2	80.0			-	20	-	-	-	
Meeting room 202	2	58.0			-	24	-	-	-	
Japanese-style room 203	2	40-tatami-mat			-	-	-	-	-	
Meeting room 204	2	35.0			-	18	-	-	-	
Large hall	2	451.5			-	120	500	-	-	
Meeting room 301	3	150.0			-	36	64	-	-	
Meeting room 302	3	58.0			-	24	-	-	-	
Meeting room 303	3	58.0			-	30	-	-	-	
Japanese-style room 304	3	25-tatami-mat			-	-	-	-	-	
Kitchen 305	3	58.0			-	30	-	-	-	

Width × Depth and the floor area may not match depending on the shape of the room.

Cultural Center “Tanto”

Nu-118 Taisei-machi, Nomi 929-0113

Tel: 0761-55-8550

Fax: 0761-55-8555

URL: <http://www.city.nomi.ishikawa.jp/>

E-mail: manabi@city.nomi.lg.jp



Music hall



■ Number of seats

704 seats (Music hall)
(Fixed seat: 632, Balcony seat: 60,
Wheelchair space: 2, Parent and child seat:10)



■ Traffic access

5-min walk from JR Nomi-Neagari Station
5-min drive from Nomi-Neagari IC of Hokuriku Expressway
8-min drive from Komatsu IC of Hokuriku Expressway



■ Hours

9:00am~10:00pm
Closed: Tuesday, year-end and New Year's holidays
(Dec. 28~Jan. 3)

■ Date to start accepting reservation

Music hall and round hall: Beginning of the month
one year before the date of use
Other facilities: Beginning of the month three months
before the date of use



■ Accommodation

None



■ Restaurants/Cafés

• Coffee shop “Himawari”: 18 seats



■ Parking

300 vehicles (free)

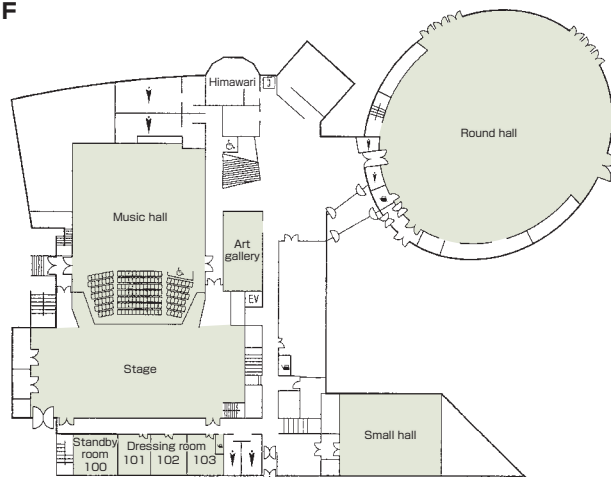


■ Remarks

Lunch boxes can be prepared by the coffee shop
(reservation required)
Coffee shop: Tel: 0761-55-8558

Floor plan

■ 1F



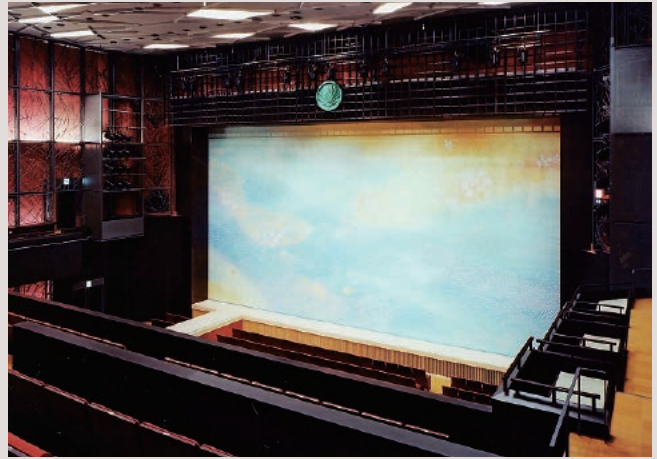
■ Convention site

Site name	Floor	Area(m ²)	Width × Depth (m)	Ceiling height(m)	Capacity (persons)					Remarks
					Fixed seats	School	Theater	Seated	Buffet	
Music hall	1.2	—	—	12.0	704	—	—	—	—	
Round hall	1	892	—	9.0	—	—	—	500	800	
Small hall	1	182	15.4 × 11.8	3.1	—	80	150	80	100	
Standby room 100	1	37	6.2 × 5.9	2.6	—	—	—	—	—	
Dressing room 101	1	35	6.2 × 4.8	2.4	—	—	—	—	—	
Dressing room 102	1	32	6.2 × 5.1	2.6	—	—	—	—	—	102 and 103 can be integrated into one space.
Dressing room 103	1	31	6.2 × 4.1	2.6	—	—	—	—	—	
Art gallery	1	61	11.0 × 5.4	4.4	—	—	—	—	—	
Meeting room 201	2	61	8.7 × 7.0	2.7	—	30	30	—	—	
Meeting room 202	2	72	10.3 × 7.0	2.7	25	—	—	—	—	
Chorus room 203	2	53	8.9 × 5.9	2.6	—	30	30	—	—	
Workshop room 204	2	92	8.4 × 10.9	2.6	—	60	60	—	—	

Width × Depth and the floor area may not match depending on the shape of the room.

Komatsu URARA Theater

710 Doihara-machi, Komatsu 923-0921
 Tel: 0761-20-5500
 Fax: 0761-24-2481
 URL: www.komatsu-urara.com
 E-mail: urara@tvk.ne.jp



Large hall



■ Number of seats
851 seats



■ Traffic access
 1-min walk from JR Komatsu Station
 12 min by bus from Komatsu Airport for Komatsu Station



■ Hours
 9:00am~10:00pm
 Closed: Wednesday

■ Date to start accepting reservation
 Hall: Beginning of the month one year before the date of use
 Meeting room: Beginning of the month six months before the date of use



■ Accommodation
 None



■ Restaurants/Cafés
 None



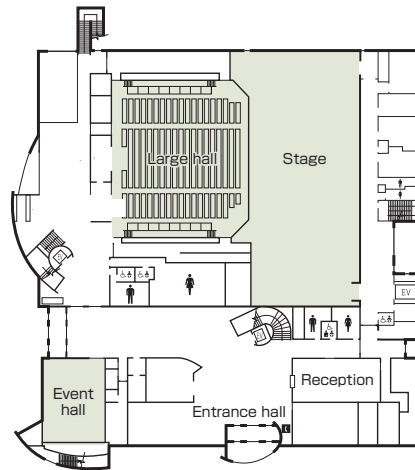
■ Parking
 None



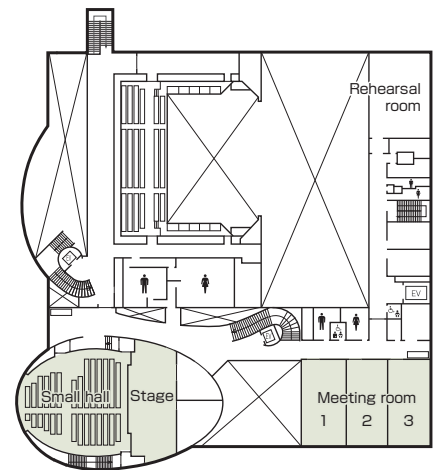
■ Remarks
 Simultaneous interpretation equipment
 Receiver: 100
 Rehearsal room: 1

Floor plan

■ 1F



■ 2F



■ Convention site

Site name	Floor	Area(m ²)	Width × Depth (m) (m)	Ceiling height(m)	Capacity (persons)					Remarks
					Fixed seats	School	Theater	Seated	Buffet	
Large hall	1		17.1 × 15.7		851	—	—	—	—	1F: 611 seats, 2F: 240 seats, Dressing room: 6
Small hall	2		10.5 × 6		250	—	—	—	—	Dressing room:1
Meeting room	2	224			—	100	200	—	—	The space can be partitioned into two or three rooms.
Event hall	1	107			—	45	—	—	—	

Width × Depth and the floor area may not match depending on the shape of the room.

Komatsu City Public Hall

32 Marunouchikoen-machi, Komatsu 923-0903

Tel: 0761-22-3141

Fax: 0761-22-3140

E-mail: koukaidou@city.komatsu.lg.jp



Large hall



Large meeting room



■ Number of seats

1,078 seats (Large hall)



■ Traffic access

5 min by taxi from JR Komatsu Station

15-min walk from JR Komatsu Station

10 min by taxi from Komatsu IC

10 min by taxi from Komatsu Airport



■ Hours

9:00am~10:00pm

Closed: Year-end and New Year's holidays (Dec. 29~Jan. 3)

■ Date to start accepting reservation

Large hall: One year before the date of use

Meeting room: 3 months before the date of use



■ Accommodation

None



■ Restaurants/Cafés

None



■ Parking

None

City Hall parking lot (free)

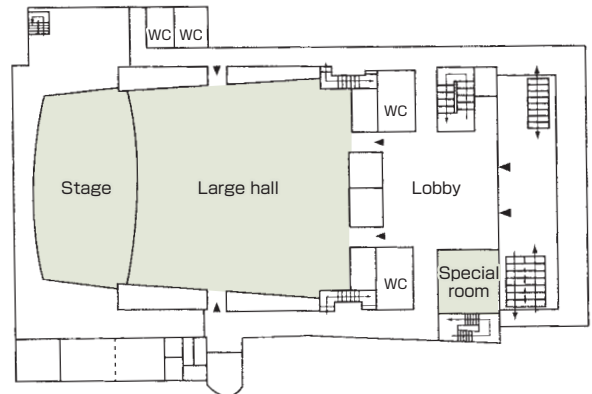


■ Remarks

None

Floor plan

■ 2F



■ Convention site

Site name	Floor	Area(m ²)	Width × Depth (m)	Ceiling height(m)	Capacity (persons)					Remarks
					Fixed seats	School	Theater	Seated	Buffet	
Meeting room 1	1	72	12.0 × 6.0	2.8	—	30	—	—	—	
Meeting room 2	1	72	12.0 × 6.0	2.8	—	30	—	—	—	
Tea ceremony room	1	58	10.0 × 6.0	2.6	—	20	—	—	—	
Japanese-style room	1	21-tatami-mat	10.0 × 5.0	2.7	—	20	—	—	—	
Large hall	2	660	—	—	1,078	—	—	—	—	
Special room	2	36	6.0 × 6.0	2.4	10	—	—	—	—	
Meeting room 5	3	60	10.0 × 6.0	3.3	—	20	—	—	—	
Meeting room 6	3	60	10.0 × 6.0	3.3	—	20	—	—	—	
Meeting room 7	3	60	10.0 × 6.0	3.3	—	20	—	—	—	
Large meeting room	4	216	18.0 × 12.0	3.4	—	100	—	—	—	

Width × Depth and the floor area may not match depending on the shape of the room.

Komatsu Civic Center

Hei-42-3 Oshima-machi, Komatsu 923-0001

Tel: 0761-24-6101

Fax: 0761-23-5811

E-mail: siminsenta@city.komatsu.lg.jp



Large hall



■ Number of seats

546 seats (Large hall)
(Parent and child seats are provided.)



■ Traffic access

4-min drive from Komatsu IC of Hokuriku Expressway
8 min by taxi from JR Komatsu Station
10 min by taxi from Komatsu Airport



■ Hours

9:00am~10:00pm
Closed: Monday (the following weekday when Monday is a holiday), year-end and New Year's holidays (Dec. 29~Jan. 3)

■ Date to start accepting reservation

Large & Small halls: Beginning of the month one year before the date of use
Other facility : Beginning of the month three months before the date of use



■ Accommodation

None



■ Restaurants/Cafés

None



■ Parking

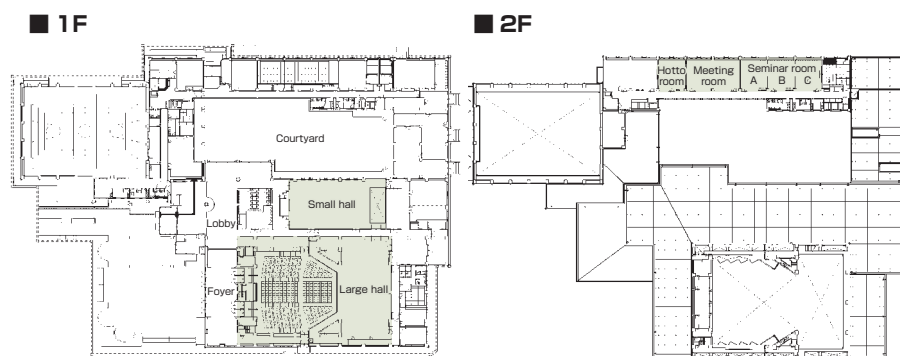
300 vehicles



■ Remarks

No smoking (incl. parking lot)

Floor plan



■ Convention site

Site name	Floor	Area(m ²)	Width × Depth (m)	Ceiling height(m)	Capacity (persons)					Remarks
					Fixed seats	School	Theater	Seated	Buffet	
Large hall	1	852	15.0 × 13.0	7.8	546	-	-	-	-	(with parent and child seats)
Small hall	1	350	14.0 × 25.0	6.0	-	240	350	-	-	
Meeting room	2	126	8.5 × 14.8	2.7	-	54	-	-	-	
Seminar room A,B,C	2	181	8.5 × 21.4	2.7	-	126	-	-	-	
Hotto room	2	63	8.5 × 7.5	2.7	-	30	-	-	-	

Width × Depth and the floor area may not match depending on the shape of the room.

Komatsu Chamber of Commerce and Industry

Small and Medium Enterprises Seminar House

Ni-1 Sono-machi, Komatsu 923-8566

Tel: 0761-21-3121

Fax: 0761-21-3120

URL: <https://komatsu-cci.or.jp/>



3FLarge hall(Large conference room)



■ Number of seats

200 seats (3F large hall in school style)

440 seats (3F large hall in theater style)



■ Traffic access

10 min by bus from JR Komatsu Station (Get off at Komatsu Shokokaigisho-mae and walk for one min.)

5 min by taxi from JR Komatsu Station



■ Hours

9:00am~ 9:00pm (Weekday)

9:00am~ 5:00pm (Sat, Sun, holiday)

Closed: Year-end and New Year's holidays (Dec. 29~Jan. 3)

■ Date to start accepting reservation

At any time



■ Accommodation

None



■ Restaurants/Cafés

None



■ Parking

80 vehicles (free)

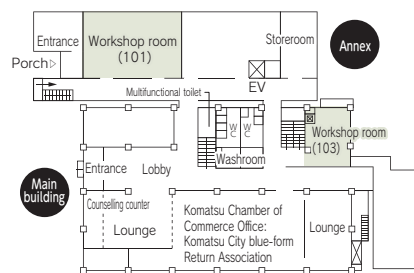


■ Remarks

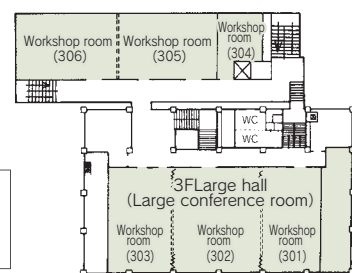
None

Floor plan

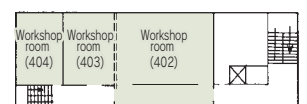
■ 1F



■ 3F



■ 4F



■ Convention site

Site name	Floor	Area(m ²)	Width × Depth (m)	Ceiling height(m)	Capacity (persons)					Remarks
					Fixed seats	School	Theater	Seated	Buffet	
101	1	81	10.7 × 7.6	3.0	—	42	56	—	—	
103	1	39	7.5 × 5.4	2.5	—	16	20	—	—	
3FLarge hall(Large conference room)	3	339	26.0 × 13.0	4.0	—	200	440	—	—	With a stage, the space can be partitioned into three rooms.
304 (Japanese-style room)	3	12.5-tatami-mat	6.0 × 5.3	2.5	—	8	—	—	—	
305, 306	3	162	23.1 × 7.0	3.0	—	102	200	—	—	The space can be partitioned into two rooms.
402	4	81	10.8 × 7.5	3.0	—	42	40	—	—	
403	4	40	7.0 × 5.8	3.0	—	16	20	—	—	
404	4	40	7.0 × 5.8	3.0	—	16	20	—	—	

Width × Depth and the floor area may not match depending on the shape of the room.

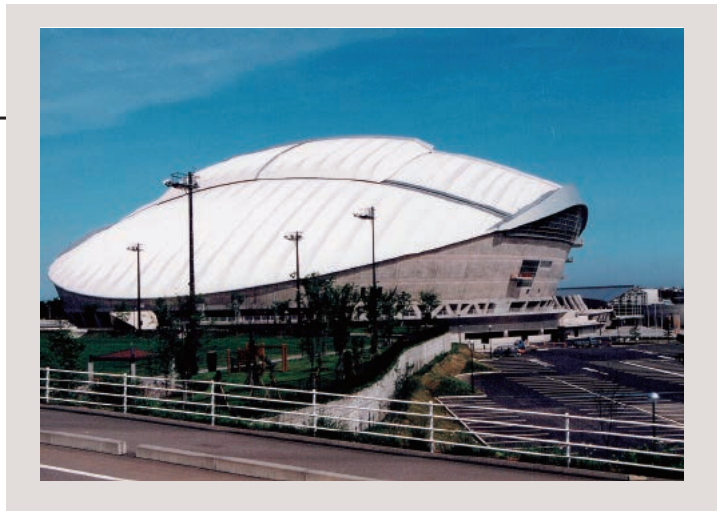
Komatsu Dome

Ho-5 Hayashi-machi, Komatsu 923-0344

Tel: 0761-43-1677

Fax: 0761-43-4466

URL: <http://kskkousya.com>



■ Number of seats

5000 seats (Arena)

312 seats (Assembly hall)



■ Traffic access

5-min drive from JR Awazu Station

15-min drive from JR Komatsu Station

15-min drive from JR Kaga Onsen Station

20-min drive from Komatsu Airport

20-min drive from Komatsu IC or Kaga IC of Hokuriku Expressway



■ Hours

9:00am~10:00pm

Closed: Year-end and New Year's holidays (Dec. 29~Jan. 3)

■ Date to start accepting reservation

• Arena, Conference room, Meeting room 1~4, Lifelong learning room, Japanese-style room: Beginning of the month three months before the date of use

* Arena: Six months or one year before the date of use depending on the usage

• Assembly hall: Beginning of the month six months before the date of use



■ Accommodation

None



■ Restaurants/Cafés

None



■ Parking

804 vehicles

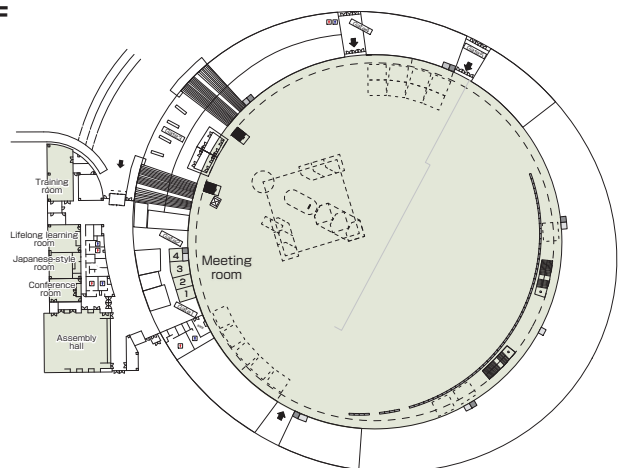


■ Remarks

None

Floor plan

■ 1F



■ Convention site

Site name	Floor	Area(m ²)	Width × Depth (m)	Ceiling height(m)	Capacity (persons)					Remarks
					Fixed seats	School	Theater	Seated	Buffet	
Arena	1	14,344		56			5,000			
Assembly hall	1	444			312	240	400	156		
Conference room	1	80			45	36				
Meeting room 1 ~ 4	1	103								
Meeting room 1	1	28			12					
Meeting room 2	1	26			12					
Meeting room 3	1	27			12					
Meeting room 4	1	22			12					
Lifelong learning room (Cooking classroom)	1	106			36					
Training room	1	170								
Japanese-style room	1	97				10				

Width × Depth and the floor area may not match depending on the shape of the room.

Komatsu Hokuden Hall (temporary name)

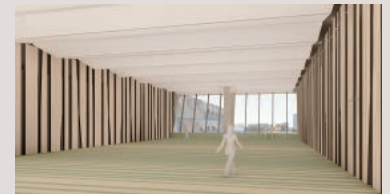
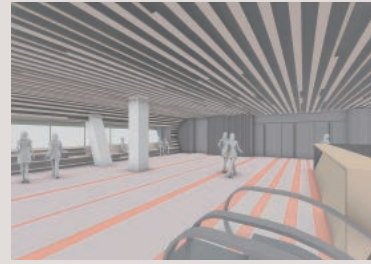
1-100 Hinode-machi, Komatsu 923-0868

Tel: 0761-24-3036

Fax:

URL:

E-mail:



Floor plan



■ Number of seats

620 seats (Hall 1+2+3+Waiting room in seated style)

780 seats (Hall 1+2+3 in theater style)



■ Traffic access

1-min walk from JR Komatsu Station

12 min by bus from Komatsu Airport

10-min drive from Komatsu IC of Hokuriku Expressway



■ Hours

9:00am~10:00pm

Open year-round

■ Date to start accepting reservation

Please consult us. (to be open in spring 2024)



■ Accommodation

On 9F and 10F,

GRANBINARIO KOMATSU Annex (temporary name):

66 single rooms



■ Restaurants/Cafés

To be installed in the hall



■ Parking

None

* Please use pay parking around JR Komatsu Station



■ Remarks

None

■ Convention site

Site name	Floor	Area(m ²)	Width × Depth (m)	Ceiling height(m)	Capacity (persons)					Remarks
					Fixed seats	School	Theater	Seated	Buffet	
Hall 1	2	220	Approx. 13.0 × 15.0	5.5	–	100	260	190	260	
Hall 2	2	185	Approx. 11.0 × 15.0	5.5	–	80	220	160	220	
Hall 3	2	250	Approx. 15.0 × 15.0	5.5	–	110	300	210	300	
Hall 1+2	2	405	Approx. 24.0 × 15.0	5.5	–	180	480	350	480	
Hall 2+3	2	435	Approx. 26.0 × 15.0	5.5	–	190	520	370	520	
Hall 1+2+3	2	655	Approx. 40.0 × 15.0	5.5	–	290	780	560	780	
Hall 1+2+3+Waiting room	2	730	Approx. 45.0 × 15.0	5.5	–	–	–	620	870	

Width × Depth and the floor area may not match depending on the shape of the room.

Science Hills Komatsu

(Creative Science Museum)

2 Komatsunomori, Komatsu 923-8610

Tel: 0761-22-8610

Fax: 0761-23-8686

URL: <http://science-hills-komatsu.jp>

E-mail: kagaku@city.komatsu.lg.jp



Wakuwaku hall



■ Number of seats

120 seats (3D theater)

180 seats (Wakuwaku hall in theater style)

* Wakuwaku hall is provided with movable partitions.



■ Traffic access

8-min drive from Komatsu IC of Hokuriku Expressway

10-min drive from Komatsu Airport

3-min walk from JR Komatsu Station East Exit



■ Hours

9:30am~10:00pm

Closed: Monday (the following weekday when Monday is a holiday), (Open during Golden Week and summer vacation), year-end and New Year's holidays (Dec. 29~Jan. 3)

In addition, the facility may be closed temporarily due to maintenance.

■ Date to start accepting reservation

Beginning of the month one year before the date of use

3D theater: Beginning of the month one year before the date of use to one month before

Other facility: Beginning of the month one year before the date of use to 10 days before



■ Accommodation

None



■ Restaurants/Cafés

None



■ Parking

[Municipal] Hill's parking (pay):

89 vehicles (incl. two wheelchair spaces)

Parking fee: 100yen for the first hour, additional fee: 50yen for every 30min

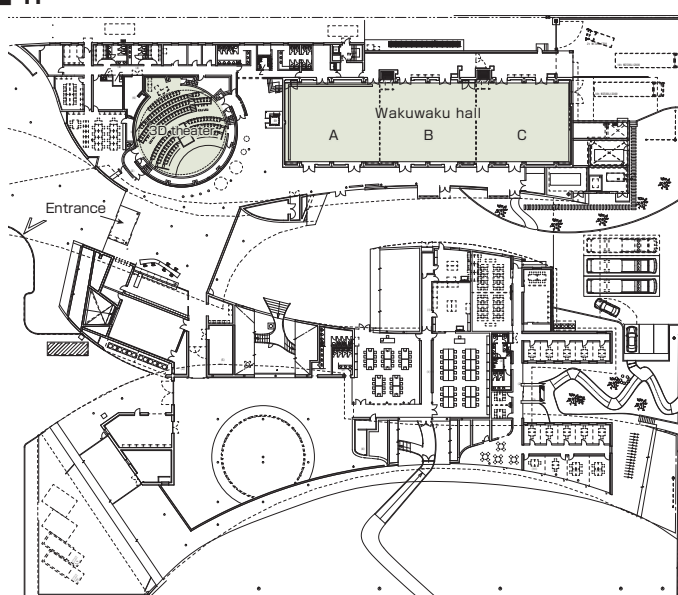


■ Remarks

None

Floor plan

■ 1F



■ Convention site

Site name	Floor	Area(m ²)	Width × Depth (m)	Ceiling height(m)	Capacity (persons)					Remarks
					Fixed seats	School	Theater	Seated	Buffet	
Wakuwaku hall A	1	247.5	16.1 × 13.8	5	—	126	180	—	—	
Wakuwaku hall B	1	247.5	16.1 × 13.8	5	—	126	180	—	—	
Wakuwaku hall C	1	247.5	16.1 × 13.8	5	—	126	180	—	—	
3D theater	1	200	16.0(Diameter)	10.35	120	—	—	—	—	

Width × Depth and the floor area may not match depending on the shape of the room.

Hotel Binario Komatsu Centre

4-93 Hinode-machi, Komatsu 923-0868

Tel: 0761-24-6123

Fax: 0761-24-6129

URL: <https://hotel-binario.jp/centre/>



Imperial



■ Number of seats

250 seats (Imperial in school style)
600 seats (Imperial in theater style)



■ Traffic access

10-min walk from JR Komatsu Station East Exit
 15-min drive from Komatsu Airport
 15-min drive from Komatsu IC of Hokuriku Expressway



■ Hours

9:00am~9:00pm

Open year-round

■ Date to start accepting reservation

* Temporary reservation is available.
 Please consult us.



■ Accommodation

- Single room: 48
 - Double room: 4
 - Twin room: 15
 - Japanese-style room: 3
- Total: 70 rooms (120 people)



■ Restaurants/Cafés

- Restaurant "Ricordo Piazza"
: 70 seats (max. 100 seats)
- "Chiso"
: 46 seats, 4 private rooms



■ Parking

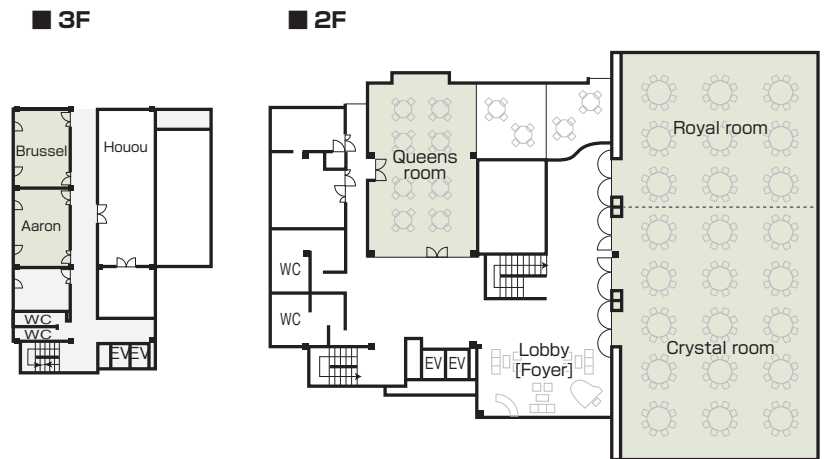
• **230** vehicles
 (10 or more large buses are available) (free)



■ Remarks

Coffee shop : 30 seats
 Provided with a dressing room
 Wi-Fi accessible

Floor plan



■ Convention site

Site name	Floor	Area(m ²)	Width × Depth (m)	Ceiling height(m)	Capacity (persons)					Remarks
					Fixed seats	School	Theater	Seated	Buffet	
Ricordo (L)	1	67		3		40	70	40	50	
Ricordo (R)	1	153		3.2				70	80	
Imperial room	2	440	30.2 × 14.4	5.5	—	250	600	310	800	
Crystal room	2	280	19.2 × 14.4	5.5	—	150	350	150	250	
Royal room	2	160	11.4 × 14.4	5.5	—	96	200	100	150	
Queens room	2	110	6.6 × 14.1	2.9	—	54	90	60	70	
Aaron	3	45	5.2 × 7.5	2.9	—	18	28	20	30	
Brussel	3	45	5.2 × 7.5	2.9	—	18	28	20	30	
Houou	3	82	5.5 × 16.2	2.9	—	30	70	40	50	

Width × Depth and the floor area may not match depending on the shape of the room.

Route-Inn Grantia Komatsu Airport

4-116-1 Nagasaki-machi, Komatsu 923-0004

Tel: 050-5847-7505 (IP phone)

Fax: 0761-23-7010

URL: <https://www.route-inn.co.jp/>

E-mail:

g-komatsu@route-inn.co.jp (Accommodation/ Inquiries)

g-komatsu-banquet@route-inn.co.jp (Banquet)



Kyoka



■ Number of seats

400 seats (Kyoka)



■ Traffic access

5-min drive from Komatsu Airport
7-min drive from JR Komatsu Station
1-min drive from Komatsu IC



■ Hours

9:00am~10:00pm (Meeting room and banquet room)

■ Date to start accepting reservation

One year before the date of use



■ Accommodation

• Main building: 41

• Annex (Biz court): 156

Total: 197 rooms



■ Restaurants/Cafés

Main building 1F

Restaurant "Nagomi" (Open

6:00pm~10:00pm) (LO: 9:30pm)

* Closed: Sunday and Monday



■ Parking

• 270 vehicles



■ Remarks

• Natural hot spring "Ataka-no-yu" on the main bldg. 3F.

• Golf driving range: 6:00am~10:00pm

• Tennis court: 7:00am~5:00pm

• Pickup buses are available for group tours. (Two buses: 28-seat and 25-seat)* Please consult us.

Cancellation policy

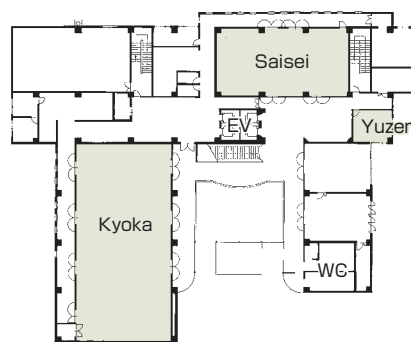
◆ On the day: 100%

◆ 15 days before: 50%

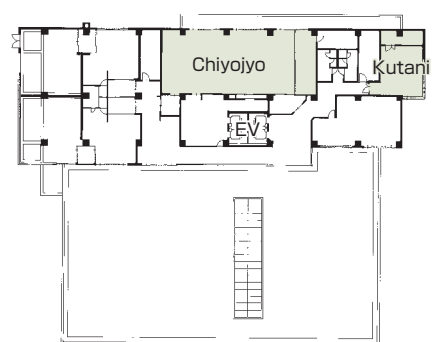
◆ 31 days before: 10%

Floor plan

■ 2F



■ 3F



■ Convention site

Site name	Floor	Area(m ²)	Width × Depth (m) (m)	Ceiling height(m)	Capacity (persons)					Remarks
					Fixed seats	School	Theater	Seated	Buffet	
Kyoka (entire room)	2 (Main building)	333				Seated by 2 people ~170 Seated by 3 people ~255	400	175	400	
Kyoka (half)	2 (Main building)	166				Seated by 2 people ~70 Seated by 3 people ~105	200	63	100	
Saisei (entire room)	2 (Main building)	160				Seated by 2 people ~60 Seated by 3 people ~90	200	56	100	
Saisei (half)	2 (Main building)	80				Seated by 2 people ~24 Seated by 3 people ~36	90	28	50	
Chiyoyjo (entire room)	3(Main building)	90-tatami-mat				—				
Chiyoyjo (half)	3(Main building)	45-tatami-mat				—				
Kutani	3 (Main building)	40				Seated by 2 people ~14 Seated by 3 people ~21		7		
Yuzen	2 (Main building)	24				Seated by 2 people ~12 Seated by 3 people ~18				

Width × Depth and the floor area may not match depending on the shape of the room.

Municipal Lyceum in Kaga "Come On a Hall"

2-68 Hokubu, Yamashiro Onsen, Kaga 922-0243

Tel: 0761-77-2811

Fax: 0761-77-5681

URL: <http://kaga-bunka.lolipop.jp>



Hall



■ Number of seats

1,426 seats (Hall)

(Six wheelchair spaces, 1,310 seats are available when the orchestra pit is used)



■ Traffic access

15-min drive from Kaga IC of Hokuriku Expressway
15-min drive from Katayamazu IC of Hokuriku Expressway
7 min by bus from JR Kaga Onsen Station
(Get off at Bunka-kaikan-mae and walk for 2 min.)
25 min by taxi from Komatsu Airport



■ Hours

9:00am~10:00pm

Closed: Year-end and New Year's holidays (Dec. 29~Jan. 3), maintenance and inspection period

■ Date to start accepting reservation

Hall and meeting room: One year before the date of use

Meeting room only: Six months before the date of use



■ Accommodation ■ 1F

None



■ Restaurants/Cafés

- Tea ceremony room
- Coffee shop



■ Parking

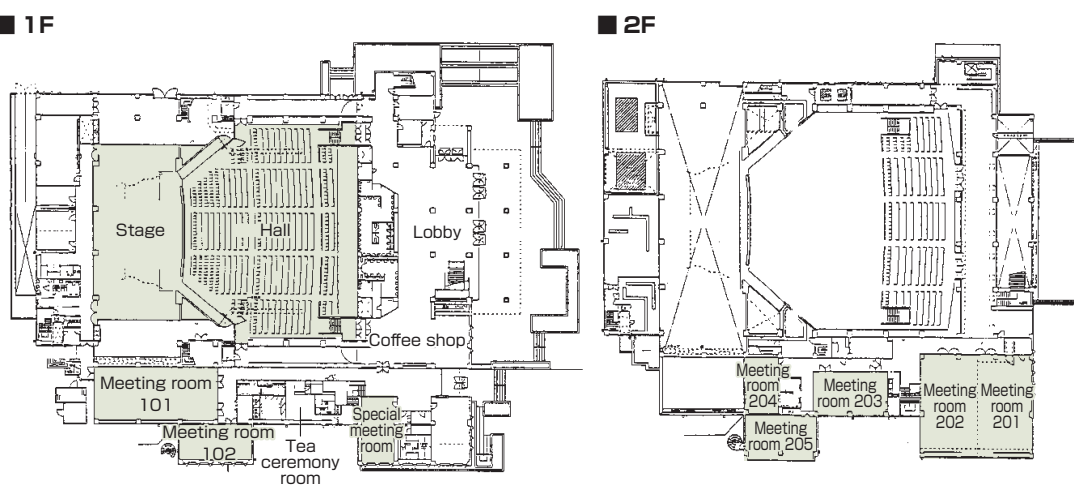
300 vehicles (free)



■ Remarks

None

Floor plan



■ Convention site

Site name	Floor	Area(m ²)	Width × Depth (m)	Ceiling height(m)	Capacity (persons)					Remarks
					Fixed seats	School	Theater	Seated	Buffet	
Hall	1	964	33.7 × 40.9	—	1,426	—	—	—	—	With an orchestra pit
Meeting room 101	1	162	18.5 × 8.5	2.7 ~ 3.2	—	108	144	—	—	} Combined use is possible.
Meeting room 102	1	72	11.2 × 6.0	2.5 ~ 3.0	—	36	60	—	—	
Special meeting room	1	62	5.6 × 10.2	2.5	14	—	—	—	—	
Meeting room 201	2	131	8.4 × 14.5	2.9	—	90	150	—	—	
Meeting room 202	2	131	8.4 × 14.5	2.9	—	90	150	—	—	
Meeting room 203	2	77	10.9 × 6.2	2.7 ~ 3.2	—	42	63	—	—	
Meeting room 204	2	48	5.4 × 8.5	2.5	—	24	—	—	—	
Meeting room 205	2	75	10.9 × 6.2	2.5	—	36	70	—	—	

Width × Depth and the floor area may not match depending on the shape of the room.

Hatori

17 Yamashiro Onsen-dori, Kaga 922-0254
 Tel: 0761-77-8200
 Fax: 0761-77-1900
 URL: <http://hatori.jp/>



Hosho



■ Number of seats
100 seats (Hosho)



■ Traffic access
 15-min drive from Kaga IC of Hokuriku Expressway
 Pickup bus from JR Kaga Onsen Station from 1:30pm to 6:00pm (Reservation required)
 10 min by taxi from JR Kaga Onsen Station
 25 min by taxi from Komatsu Airport



■ Hours
 8:00am~10:00pm

■ Date to start accepting reservation
 • One year before the date of use



■ Accommodation
 • Hagi: 27 rooms
 • Fuji: 26 rooms
 • Fuji (with an open-air bath): 6 rooms
 • Single room: 8
 Total: 67 rooms (250 people)



■ Restaurants/Cafés
 • Restaurant "Uzuki": 52 seats
 • Dining "Uzuki": 69 seats



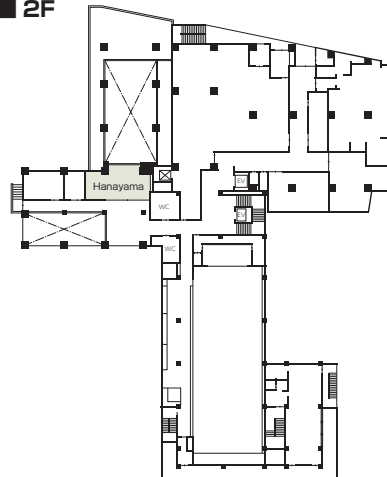
■ Parking
 • 60 vehicles
 • 30 buses



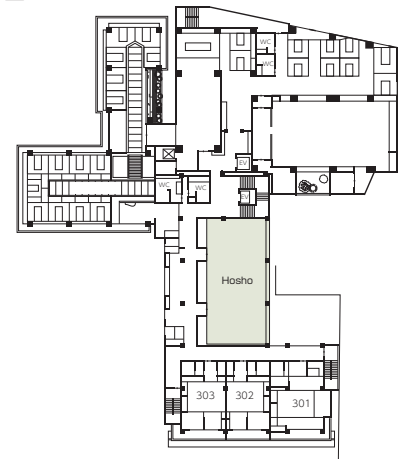
■ Remarks
 Wireless LAN accessible

Floor plan

■ 2F



■ 3F



■ Convention site

Site name	Floor	Area(m ²)	Width × Depth (m) (m)	Ceiling height(m)	Capacity (persons)					Remarks
					Fixed seats	School	Theater	Seated	Buffet	
Hosho	3	120	7.7 × 15.6	2.4	—	70	100	—	—	
Hanayama	2	28	4 × 7	2.4	12	—	—	—	—	

Width × Depth and the floor area may not match depending on the shape of the room.

Hotel Arrowle

To-5-1 Shibayama-machi, Kaga 922-0402
 Tel: 0761-75-8000
 Fax: 0761-75-8008
 URL: <http://www.arrowle.co.jp>
 E-mail: info@arrowle.co.jp



Zuisyo



■ Number of seats
630 seats (Zuisyo)



■ Traffic access
 5-min drive from Katayamazu IC of Hokuriku Expressway
 15 min by taxi from JR Kaga Onsen Station
 15 min by taxi from Komatsu Airport
 Pickup service is available by reservation.



■ Hours
 8:00am~10:00pm
 Open year-round
 ■ Date to start accepting reservation
 At any time



■ Accommodation
 • Standard twin room: 48
 • Hollywood twin room: 6
 • Standard double room: 6
 • Deluxe twin room: 38
 • Luxury twin room: 11
 • Deluxe triple room: 20
 • Royal suite: 1
 Total: 130 rooms (300 people)



■ Restaurants/Cafés
 • Terrace Restaurant "Bellavista": 83 seats
 • Japanese Cuisine "Chikusui"
 Table: 66 seats
 Counter: 10 seats
 Japanese style: 3 rooms



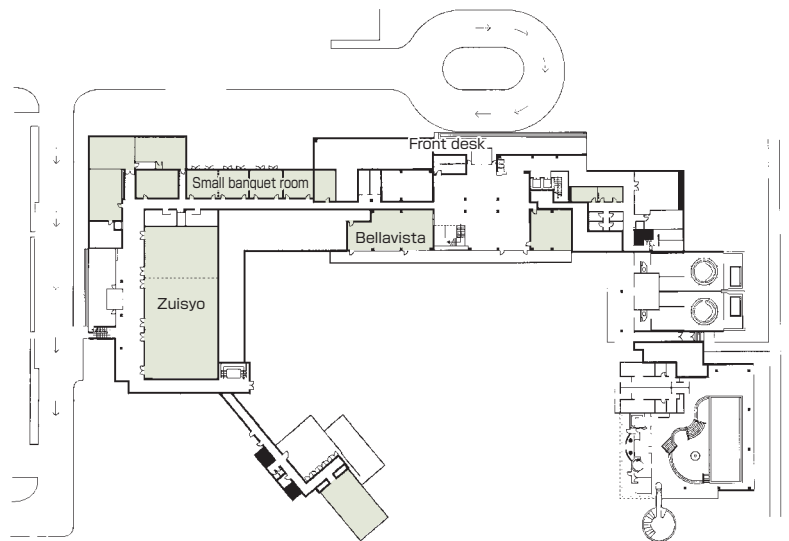
■ Parking
285 vehicles (free)



■ Remarks
 Wireless LAN accessible

Floor plan

■ 1F



■ Convention site

Site name	Floor	Area(m ²)	Width × Depth (m)	Ceiling height(m)	Capacity (persons)					Remarks
					Fixed seats	School	Theater	Seated	Buffet	
Zuisyo (entire)	1	646	16.6 × 37.4	6.0	—	420	630	300	540	
Zuisyo (2/3)	1	428	16.6 × 23.9	6.0	—	250	370	200	360	
Zuisyo (1/3)	1	213	16.6 × 12.9	6.0	—	80	140	100	180	
Medium-sized banquet room	1	112	6.3 × 14.5	3.0	—	50	70	40	90	A room created by connecting two small banquet rooms.
Small banquet room	1	56	6.3 × 7.3	3.0	—	25	40	15	45	4 rooms

Width × Depth and the floor area may not match depending on the shape of the room.

Banshokaku

3 Higashiyama-machi, Yamashiro Onsen, Kaga

922-0253

Tel: 0761-77-1515

Fax: 0761-77-1360

URL: <http://www.bansyoukaku.co.jp/>



■ Number of seats

150 seats

(Convention hall "Hakusan" in school style)



■ Traffic access

15 min by pickup bus from JR Kaga Onsen Station
(Every hour from 2:50 to 5:50, Reservation required)
10 min by taxi from JR Kaga Onsen Station
40 min from Komatsu Airport
(to the JR station by bus and by pickup bus from the station)



■ Hours

9:00am~6:00pm

■ Date to start accepting reservation

Six months before the date of use



■ Accommodation

- Guest room with an open-air bath: 3
- Guest room with a viewing bath: 11
- Japanese/Western-style room: 3
- Japanese-style room: 32

Total: 49 rooms



■ Restaurants/Cafés

- Coffee lounge: 45 seats



■ Parking

- 20 large buses
- 70 vehicles



■ Remarks

None

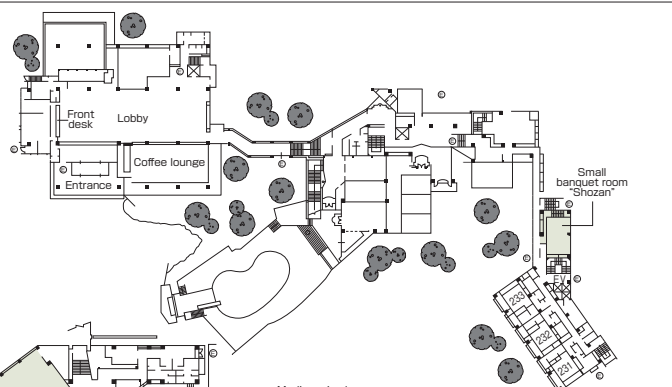


Hakusan

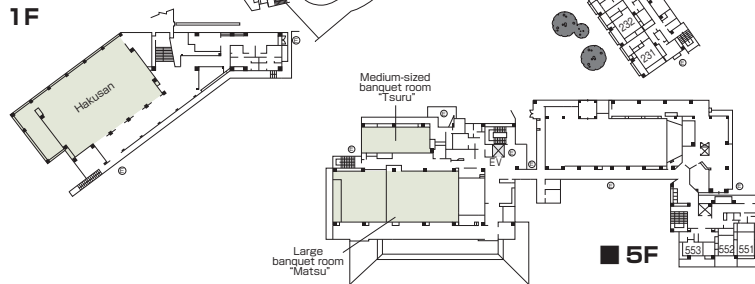


Floor plan

■ LF



■ 1F



■ 5F

■ Convention site

Site name	Floor	Area(m ²)	Width × Depth (m)	Ceiling height(m)	Capacity (persons)					Remarks
					Fixed seats	School	Theater	Seated	Buffet	
Hakusan	1	344	15 × 22	4.5		150				The space can be partitioned into two rooms.
Large banquet room "Matsu"	5	100-tatami-mat								The space can be partitioned into two rooms.
Medium-sized banquet room "Tsuru"	5	30-tatami-mat				20				
Small banquet room "Shozan"	1	25-tatami-mat			14					Tables are arranged in square shape.

Width × Depth and the floor area may not match depending on the shape of the room.

Kaga Hyakumangoku

11-2-1 Yamashiro Onsen, Kaga, 922-0242
 Tel: 0761-77-0200 Fax: 0761-77-0201
 URL: <https://www.kaga-hyakumangoku.jp/>
 E-mail: yoyaku@kaga-hyakumangoku.jp



Convention hall "Sakura"



■ Number of seats
900 seats (Convention hall "Gosai" in theater style)



■ Traffic access
 10-min drive from JR Kaga Onsen Station
 Free pickup bus is available (reservation required)



■ Hours
 9:00am~10:00pm

■ Date to start accepting reservation
 One year before the date of use



■ Accommodation
 • Main building: 179 rooms (813 people)
 • Annex: 45 rooms (210 people)



■ Restaurants/Cafés
 • Restaurant "Umeno-an"
 • Shop
 • Karaoke room



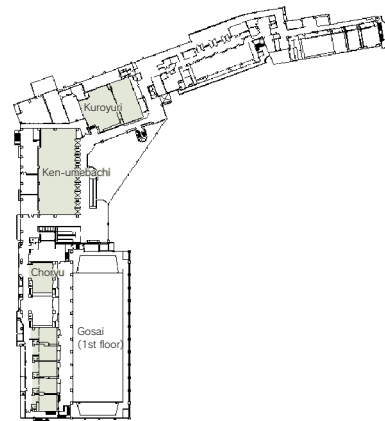
■ Parking
 • 200 vehicles
 • 20 large buses



■ Remarks
 27 large and small banquet rooms
 Wi-Fi accessible

Floor plan

■ 2F



■ Convention site

Site name	Floor	Area(m ²)	Width × Depth (m)	Ceiling height(m)	Capacity (persons)					Remarks
					Fixed seats	School	Theater	Seated	Buffet	
Convention hall "Ken-ume-bachi"	2	560	16.5 × 36.5	3.4		500	800	250		The space can be partitioned into two rooms.
Convention hall "Sakura"	2	460	20.0 × 20.0	4.0		500	800	230		The space can be partitioned into two rooms.
Kikuzakura	1	240	9.0 × 26.0	3.5		120	180	80		The space can be partitioned into two rooms.
Gosai	1	1,000	21.6 × 41.5	5.0		700	900	600		The space can be partitioned into two rooms.
Kuroyuri	2	175	9.5 × 18.0	2.7		100	150	65		
Choryu	2	96	8.1 × 12.0	2.8		55	90	40		

Width × Depth and the floor area may not match depending on the shape of the room.

Yamanaka Onsen Bunka Kaikan

To-5-1 Nishikatsuragi-machi, Yamanaka Onsen, Kaga
922-0112

Tel: 0761-78-3311

Fax: 0761-78-3435



Large hall



■ Number of seats

1,158 seats

(Large hall: One-floor type (Fixed seats: 458, Movable seats: 700))



■ Traffic access

20min by bus from JR Kaga Onsen Station

(Get off at Yamanaka Onsen and walk for 2 min.)

30-min drive from Komatsu Airport

20-min drive from Kaga IC of Hokuriku Expressway



■ Hours

9:00am~10:00pm

Closed: Year-end and New Year's holidays (Dec. 29~Jan. 3)

■ Date to start accepting reservation

Six months before the date of use



■ Accommodation

None



■ Restaurants/Cafés

None



■ Parking

30 vehicles (free)



■ Remarks

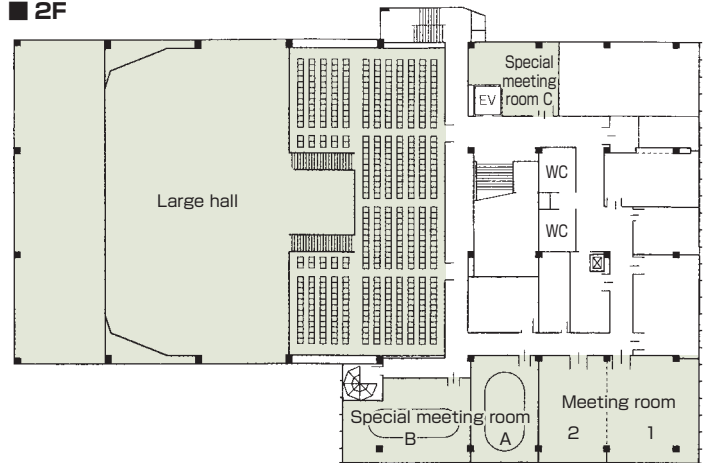
The Hotel Association, Tourism Association and Commerce and Industry Association are co-located within the building.

We can assist with a range of services, according to your needs, such as layout planning, site management, pickup bus arrangement (between JR Kaga Onsen Station/Komatsu Airport, conference venue, and hotels), and the preparation and cleaning of venues.

(Yamanaka Onsen Hotel Association: Tel: 0761-78-0330)

Floor plan

■ 2F



■ Convention site

Site name	Floor	Area(m ²)	Width × Depth (m)	Ceiling height(m)	Capacity (persons)					Remarks
					Fixed seats	School	Theater	Seated	Buffet	
Large hall	1・2	375.0	15.0 × 25.0	—	458	—	1158	—	—	1F: Movable seats: 700, 2F: Fixed seats: 458
Meeting room 1	2	79.9	8.9 × 9.0	2.6	—	50	—	—	—	
Meeting room 2	2	53.4	6.0 × 9.0	2.6	—	30	—	—	—	
Special meeting room A	2	53.2	6.0 × 9.2	2.6	20	—	—	—	—	Round table
Special meeting room B	2	63.0	10.8 × 7.1	2.6	26	—	—	—	—	Round table
Special meeting room C	2	39.2	—	2.6	—	20	—	—	—	

Width × Depth and the floor area may not match depending on the shape of the room.

Yamanaka-za

Mu-1 Yakushi-machi, Yamanaka Onsen, Kaga
922-0123

Tel: 0761-78-5523

Fax: 0761-78-5524

URL: <http://www.yamanaka-spa.or.jp/yamanakaza/>



Yamanakaza Hall



■ Number of seats

180 seats



■ Traffic access

15-min drive from JR Kaga Onsen Station
30 min by bus from JR Kaga Onsen Station
40-min drive from Komatsu Airport



■ Hours

8:30am~10:00pm
(*The facility cannot be used from 2:30pm to 4:30pm due to regular performance on Sat, Sun and holidays.) Open year-round

■ Date to start accepting reservation

Six months before the date of use (Temporary reservation is accepted separately.)



■ Accommodation

None



■ Restaurants/Cafés

None



■ Parking

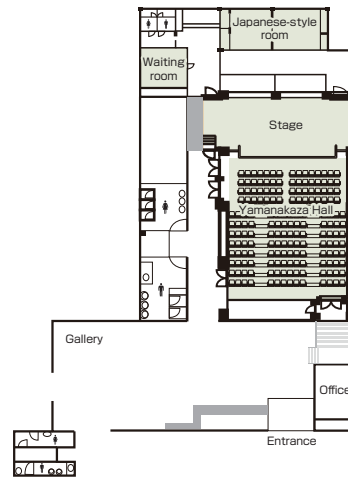
30 vehicles



■ Remarks

Floor plan

■ 1F



■ Convention site

Site name	Floor	Area(m ²)	Width × Depth (m)	Ceiling height(m)	Capacity (persons)					Remarks
					Fixed seats	School	Theater	Seated	Buffet	
Yamanakaza Hall	1	165			172	90				Fixed seats: 112, Movable seats: 60, Extra seats: 30
Japanese-style room	1	Two 10-tatami-mat rooms								
Waiting room	1	6-tatami-mat								
Lobby	1	117								
Gallery	1	28								
Yamanakaza Square	1	490								

Width × Depth and the floor area may not match depending on the shape of the room.

Yunokuni Tensyo

19-49-1 Yamashiro Onsen, Kaga 922-0298
 Tel: 0761-77-1234
 Fax: 0761-77-1260
 URL: <http://tensyo.yunokuni.jp/>
 E-mail: tensyo@yunokuni.jp



■ Number of seats

560 seats (convention hall "Tensyo" in theater style)
400 seats (convention hall "Tensyo" in school style)



■ Traffic access

10 min by taxi from JR Kaga Onsen Station
 *Pickup bus is available from 2:20pm to 6:20pm.
 25 min by taxi from Komatsu Airport



■ Hours

8:00am~ 6:00pm

■ Date to start accepting reservation

One year before the date of use



■ Accommodation

- Tensyo: 48 rooms
- Hakuun annex: 49 rooms
- Hakuun main bldg: 39 rooms
- Western-style room: 20

Total: 156 rooms, 700 people



■ Restaurants/Cafés

- Coffee lounge: 80 seats
- Shop, etc.



■ Parking

300 vehicles (free)



■ Remarks

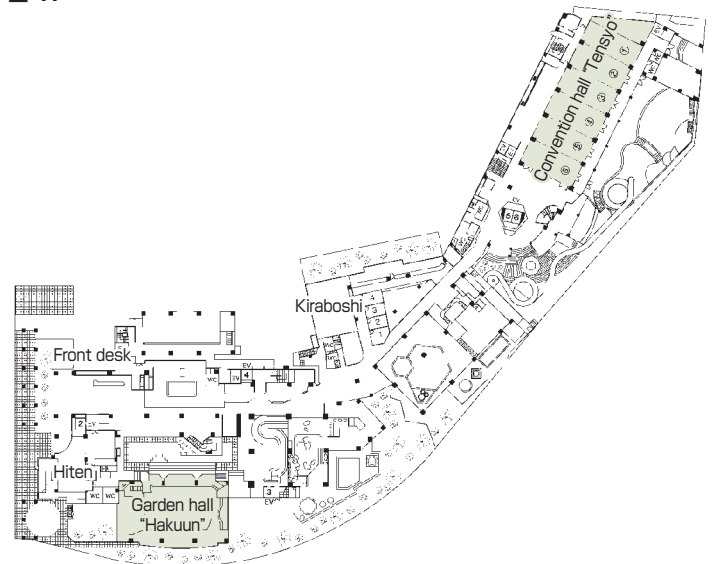
19 meeting rooms are available.



Convention hall "Tensyo"

Floor plan

■ 1F



■ Convention site

Site name	Floor	Area(m ²)	Width × Depth (m)	Ceiling height(m)	Capacity (persons)					Remarks
					Fixed seats	School	Theater	Seated	Buffet	
Convention hall "Tensyo"	1	422	36.7 × 11.3	4.0	—	400	560	250	—	The space can be partitioned into six rooms.
Garden hall "Hakuun"	1	217	17.5 × 17.4	3.0	—	180	—	—	—	
Kiraboshi	1	112	12.3 × 9.1	2.9	—	70	—	—	—	
Hiten	1	57	6.0 × 9.6	2.5	—	20	—	—	—	
Tenkei (Japanese-style)	2	284-tatami-mat	38.6 × 13.0	3.6	—	300	—	—	—	The space can be partitioned into four rooms
Hiryu (Japanese-style)	2	177-tatami-mat	23.3 × 12.6	3.0	—	160	—	—	—	The space can be partitioned into three rooms.
Ho-Oh	2	321	16.8 × 15.6	2.6	—	120	—	—	—	The space can be partitioned into three rooms.

Width × Depth and the floor area may not match depending on the shape of the room.

Rurikoh

19-58-1 Yamashiro Onsen, Kaga 922-0254

Tel: 0761-77-2323

Fax: 0761-77-3821

URL: <http://rurikoh.jp/>



Convention Hall "Hanarikyū"



■ Number of seats

250 seats (Hanarikyū)



■ Traffic access

15-min drive from Kaga IC of Hokuriku Expressway
Pickup bus from JR Kaga Onsen Station is available.

*Reservation required (1:30pm ~ 6:00pm)

10 min by taxi from JR Kaga Onsen Station

25 min by taxi from Komatsu Airport



■ Hours

8:00am~10:00pm

■ Date to start accepting reservation

One year before the date of use



■ Accommodation

• Tsuki: 85 rooms

• Kaze: 14 rooms

• Hoshi: 18 rooms

Total: 117 rooms (500 people)



■ Restaurants/Cafés

"Nisaburou": 45 seats

Dining "Tenpyou": 68 seats



■ Parking

• **250** vehicles

• **30** buses

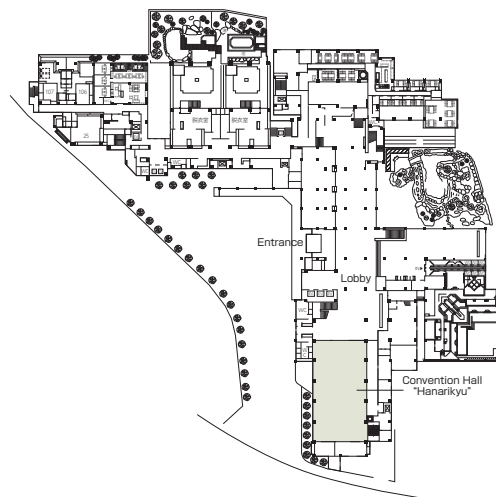


■ Remarks

Wireless LAN accessible

Floor plan

■ 1F



■ Convention site

Site name	Floor	Area(m ²)	Width × Depth (m)	Ceiling height(m)	Capacity (persons)					Remarks
					Fixed seats	School	Theater	Seated	Buffet	
Convention Hall "Hanarikyū"	1	325	13 × 25	3.1	—	200	250	120	—	The space can be partitioned into two rooms.
Heian	2	492			—	200	250	250	—	The space can be partitioned into three rooms.
Ho-oh	2	350			—	100	150	130	—	The space can be partitioned into two rooms.

Width × Depth and the floor area may not match depending on the shape of the room.

La Porte Suzu

1-1-8 Iida-machi, Suzu 927-1214

Tel: 0768-82-8200

Fax: 0768-82-7200

URL: <https://www.city.suzu.lg.jp/laporte-suzu/>



Large hall



■ Number of seats

538 seats (incl. four wheelchair spaces)



■ Traffic access

2 hr 30 min from JR Kanazawa Station by Suzu express bus
(Get off at Suzu Shiyakusho-mae and walk for 5 min)
2hr 20min drive from Kanazawa via Noto Satoyama Highway
40 min by taxi from Noto Satoyama Airport



■ Hours

9:00am~10:00pm

Closed: Tuesday,
year-end and New Year's holidays
(Dec. 29~Jan. 3)

■ Date to start accepting reservation

Beginning of the month one year before the date of use



■ Accommodation

None



■ Restaurants/Cafés

• Coffee shop "E' Café": 40 seats



■ Parking

250 vehicles (free)

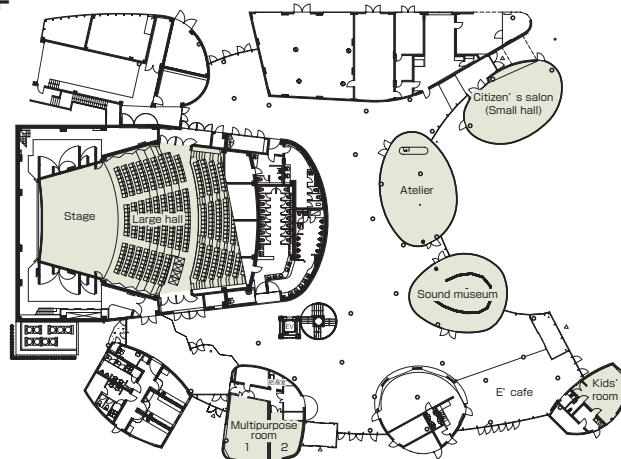


■ Remarks

Sound museum "Take-no-fue" (free)

Floor plan

■ 1F



■ Convention site

Site name	Floor	Area(m ²)	Width × Depth (m)	Ceiling height(m)	Capacity (persons)					Remarks
					Fixed seats	School	Theater	Seated	Buffet	
Large hall		794			538					Including four wheelchair spaces
Citizen's salon (Small hall)		90								
Atelier		107								
Sound museum		95								
Multipurpose room 1		44								
Multipurpose room 2		25								
Dressing room 1~3		14 people each								
Kids' room		32								
Lobby (incl. a gallery)		1,027								

Width × Depth and the floor area may not match depending on the shape of the room.

Concert Noto

To-29-2 Ushitsu, Noto-cho, Hosu 927-0433
 Ushitsu Community Center
 Tel: 0768-62-3458 Fax: 0768-62-3478
 Central library
 Tel: 0768-62-8520 Fax: 0768-62-8521
 Tourist Information Station "Tabisuta"
 Tel: 0768-62-8530 Fax: 0768-62-8531



Floor plan



■ Number of seats
312 seats



■ Traffic access
 20 min by taxi from Noto Satoyama Airport
 50 min by bus from Anamizu Station of Noto Railway
 2 hr by express bus from Kanazawa Station
 1-hr 30-min drive from Uchinada IC of Noto Satoyama Highway



■ Hours
 9:00am~10:00pm

■ Date to start accepting reservation
 Five days before the date of use



■ Accommodation
 None



■ Restaurants/Cafés
 Noto Tourist Information Station "Tabisuta"



■ Parking
 10 vehicles



■ Remarks

■ Convention site

Site name	Floor	Area(m ²)	Width × Depth (m) (m)	Ceiling height(m)	Capacity (persons)					Remarks
					Fixed seats	School	Theater	Seated	Buffet	
Meeting room 1	2	42.83								
Meeting room 2	2	39.74								
Meeting room 3	2	35.90								
Japanese-style meeting room	2	57.44	*Incl. entrance							
Cooking classroom	2	86.14								
Multipurpose hall	2	240.89								With a stage

Width × Depth and the floor area may not match depending on the shape of the room.

Wajima City Culture Hall

20-1-1 Kawai-machi, Wajima 928-0001

Tel: 0768-22-7666

Fax: 0768-22-7669

E-mail: bunka@city.wajima.lg.jp



Large hall



■ Number of seats

1,200 seats (Large hall)
*incl. four wheelchair spaces



■ Traffic access

130 min by express bus from JR Kanazawa Station
Kanazawa Port Exit (West Exit) (Get off at Wajima Ekimae.)
20-min drive from Noto Satoyama Airport IC via
Noto Satoyama Highway and Noetsu Highway



■ Hours

9:00am~10:00pm

Closed: Mondays (the following weekday when Monday is a holiday), year-end and New Year's holidays (Dec. 29~Jan. 3)

■ Date to start accepting reservation

Six months before the date of use



■ Accommodation

None



■ Restaurants/Cafés

None



■ Parking

No.1 parking lot: **97** vehicles (The first hour is free.
Event participants can park for additional hours free
of charge by completing a procedure.)

No.2 parking lot: **45** vehicles

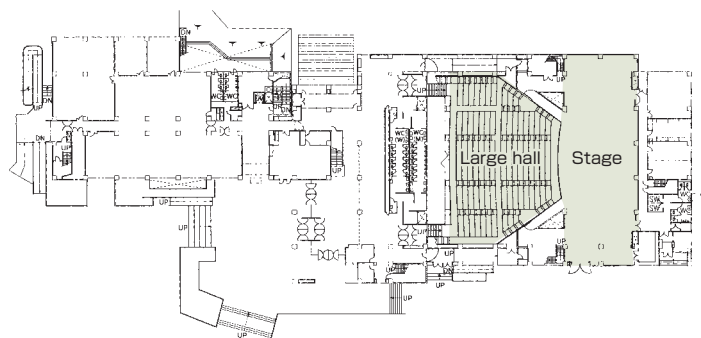


■ Remarks

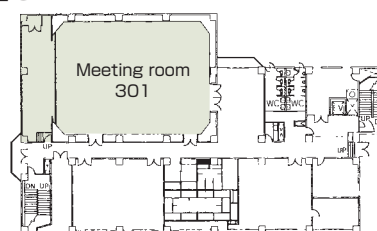
Roadside station Wajima Furatto Homu is adjacent
to the hall, accessible via a pathway.

Floor plan

■ 1F



■ 3F



■ Convention site

Site name	Floor	Area(m ²)	Width × Depth (m) (m)	Ceiling height(m)	Capacity (persons)					Remarks
					Fixed seats	School	Theater	Seated	Buffet	
Large hall	—	1,448	18.0 × 14.0	8.0	1,200	—	—	—	—	
Meeting room 301	3	335	9.0 × 4.0	4.0	—	150	300	—	—	Small hall

Width × Depth and the floor area may not match depending on the shape of the room.

Castle Manai

I-61-1 Kawajima, Anamizu-machi, Hosu
 927-0027
 Tel: 0768-52-3030
 Fax: 0768-52-3031
 URL: <http://castle-manai.com/>



■ Number of seats
200 seats (Castle Hall)



■ Traffic access
 30 min by Furusato Taxi from Noto Satoyama Airport
 (reservation required)
 5 min by taxi from Anamizu Station of Noto Railway
 10-min drive from Anamizu IC of Noto Satoyama Highway



■ Hours
 8:30am~10:00pm

■ Date to start accepting reservation



■ Accommodation
 • Western-style room: 14
 • Japanese-style room: 4
 Total: 18 rooms 62 people



■ Restaurants/Cafés
 • Restaurant "Maimon-tei": 40 seats
 • Robatayaki restaurant "Juju-tei": 48 seats
 * Lunch box, hors d'oeuvres, Kaiseki course dinner
 (reservation required)



■ Parking
60 vehicles (free)



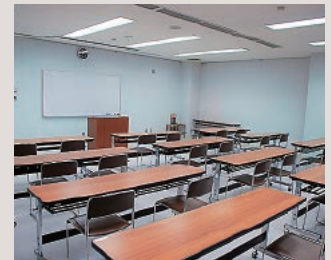
■ Remarks
 Visitors can take a bath in the large bathroom.
 (Adult: 520yen)



Castle Hall

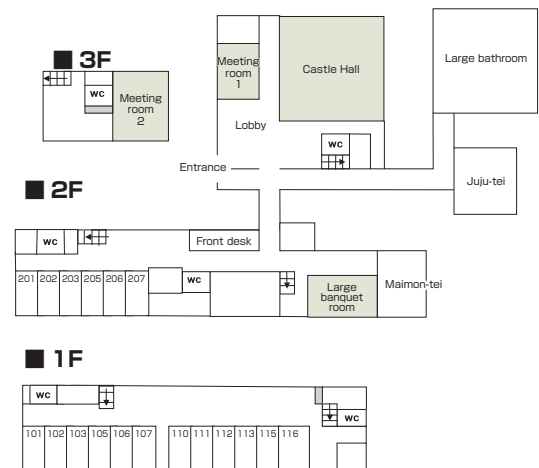


Meeting room 1



Meeting room 2

Floor plan



■ Convention site

Site name	Floor	Area(m ²)	Width × Depth (m)	Ceiling height(m)	Capacity (persons)					Remarks
					Fixed seats	School	Theater	Seated	Buffet	
Castle Hall	2	306.45	22.7 × 13.5		200	150	150	100	100	
Meeting room 1	2	38	9.5 × 4		20	20	20			
Meeting room 2	3	81	9 × 9		40	40	40			
Large banquet room	2	65-tatami-mat	11.2 × 9			60		40		

Width × Depth and the floor area may not match depending on the shape of the room.

Noto Fureai Culture Center

5-28-3 Uchiura, Anamizu-machi, Hosu
 927-0025
 Tel: 0768-52-3401
 Fax: 0768-52-2205



Hall



Meeting room



■ Number of seats
584 seats (Hall)



■ Traffic access
 5 min by taxi from Anamizu Station of Noto Railway
 10-min drive from Anamizu IC of Noto Satoyama Highway



■ Hours
 8:30am~10:00pm
 Closed: Year-end and New Year's holidays (Dec. 29~Jan. 3)

■ Date to start accepting reservation
 One year before the date of use



■ Accommodation
 • Western-style room: 8 rooms × 3 people
 • Japanese-style room: 3 rooms × 6 people
 • Large banquet room: 1 room × 20 people
 Total: 12 rooms, 62 people



■ Restaurants/Cafés
 • Dining room: 60 seats
 • Lunch box, hors d'oeuvres, snack (reservation required)



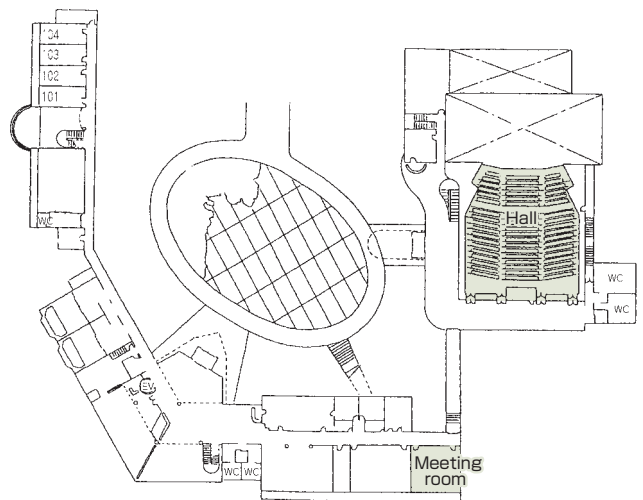
■ Parking
 200 vehicles (free)



■ Remarks
 Advance reservation is required for overnight stay.

Floor plan

■ 1F



■ Convention site

Site name	Floor	Area(m ²)	Width × Depth (m) (m)	Ceiling height(m)	Capacity (persons)					Remarks
					Fixed seats	School	Theater	Seated	Buffet	
Hall	1・2	—	14.0 × 12.0	6.5	584	—	—	—	—	
Meeting room	1	72	9.0 × 8.1	2.7	26	—	—	—	—	
Study room 1	2	72	9.0 × 8.1	2.7	—	36	—	—	—	
Study room 2	2	72	9.0 × 8.1	2.7	—	36	—	—	—	
Study room 3	2	72	9.0 × 8.1	2.7	—	36	—	—	—	
Study room 1+2+3	2	218	27.0 × 8.1	2.7	—	108	—	—	—	

Width × Depth and the floor area may not match depending on the shape of the room.

Aenokaze

8-1 Wakazaki, Wakura-machi, Nanao
 926-0192
 Tel: 0767-62-3333
 Fax: 0767-62-1123
 URL: <https://www.aenokaze.jp>
 E-mail: reserve@kagaya.co.jp



Festival hall "Ho-oh"



■ Number of seats
800 seats (Festival hall "Ho-oh")



■ Traffic access
 5 min by bus from JR Wakura Onsen Station
 Free pickup bus is available (reservation required)



■ Hours
 9:00am~10:00pm

■ Date to start accepting reservation
 One year before the date of use



■ Accommodation
 • Japanese-style room: 126 (670 people)



■ Restaurants/Cafés
 • "Kirakutei": 80 seats
 • Lounge "Hanaman-yo": 80 seats

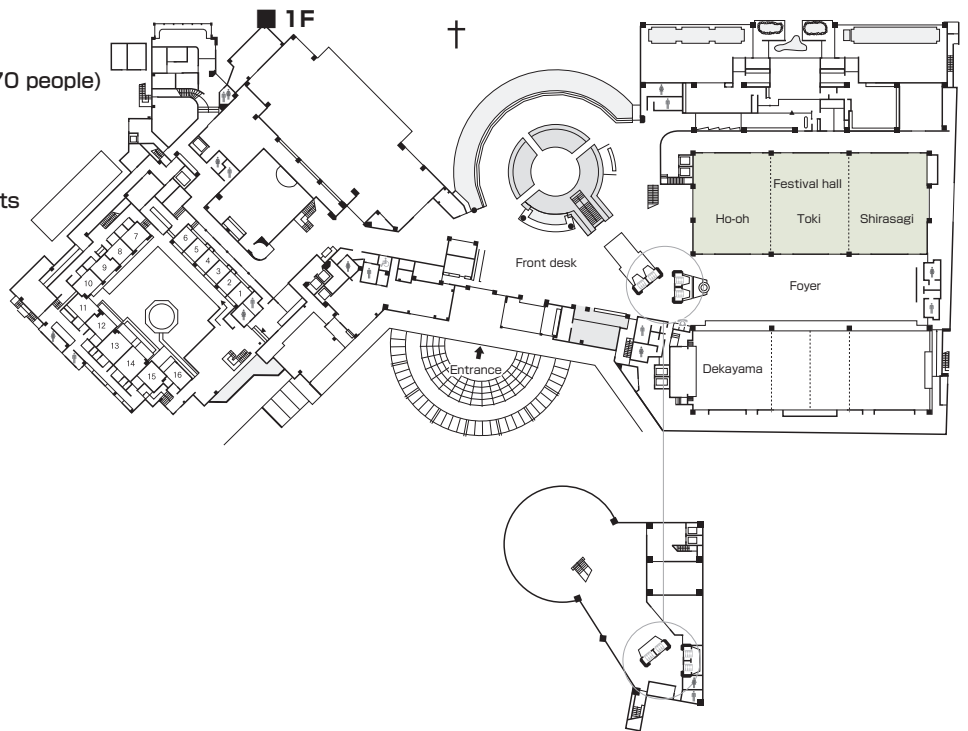


■ Parking
 500 vehicles (free)



■ Remarks
 None

Floor plan



■ Convention site

Site name	Floor	Area(m ²)	Width × Depth (m)	Ceiling height(m)	Capacity (persons)					Remarks
					Fixed seats	School	Theater	Seated	Buffet	
Festival hall "Ho-oh" (entire room)	1	750	42.0 × 18.0	8.5	—	500	800	300	600	
Ho-oh	1	250	14.0 × 18.0	8.5	—	150	250	80	100	
Toki	1	250	14.0 × 18.0	8.5	—	150	250	80	100	
Shirasagi	1	250	14.0 × 18.0	8.5	—	150	250	80	100	
Festival hall "Ho-oh" + Foyer	1	1,300	42.0 × 31.0	8.5	—	—	1,000	500	1,050	
Festival hall "Ho-oh" + Foyer + Dekayama	1	1,900	42.0 × 46.0	8.5	—	—	—	700	1,500	Dekayama (ceiling height: 2.8m)

Width × Depth and the floor area may not match depending on the shape of the room.

Kagaya

Yo-bu-80 Wakura-machi, Nanao 926-0192

Tel: 0767-62-1111

Fax: 0767-62-1121

URL: <https://www.kagaya.co.jp>

E-mail: reserve@kagaya.co.jp



Convention hall "Asuka"



■ Number of seats

600 seats
(Convention hall "Asuka" in theater style)



■ Traffic access

10 min by bus from JR Wakura Onsen Station
Free pickup bus is available. (reservation required)



■ Hours

9:00am~10:00pm

■ Date to start accepting reservation

One year before the date of use



■ Accommodation

• Japanese-style room: 233 (1,230 people)



■ Restaurants/Cafés

• Main dining "Shikitei": 120 seats
• Lounge "Hiten": 100 seats



■ Parking

300 vehicles (free)

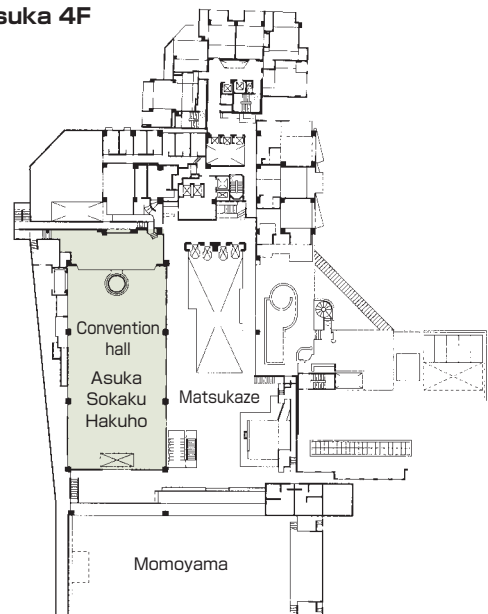


■ Remarks

None

Floor plan

■ Setsugetsuka 4F



■ Convention site

Site name	Floor	Area(m ²)	Width × Depth (m)	Ceiling height(m)	Capacity (persons)					Remarks
					Fixed seats	School	Theater	Seated	Buffet	
Convention hall "Asuka" (entire room)	4	594	36.0 × 16.5	5.3	—	400	600	300	500	Loading lift available
Asuka	4	190	11.5 × 16.5	5.3	—	70	150	60	70	
Sokaku	4	200	12.0 × 16.5	5.3	—	100	150	60	80	
Hakuho	4	200	12.0 × 16.5	5.3	—	100	150	60	80	
Convention hall "Asuka" + "Matsukaze"	4	1,050		5.3	—	—	—	—	850	
Convention hall "Asuka" + "Matsukaze" + "Momoyama"	4	1,763		5.3	—	—	—	—	1,500	Momoyama hall: ceiling hight 4m

Width × Depth and the floor area may not match depending on the shape of the room.

Nanao Sunlife Plaza

Wo-bu-38 Motofuchu-machi, Nanao 926-0021
 Culture hall: Nanao City Sports Association
 Tel: 0767-53-1160 Fax: 0767-53-3260
 Plaza annex: Yatago Community Center
 Tel: 0767-52-5240 Fax: 0767-52-5249



Large hall



■ Number of seats
990 seats (Large hall)



■ Traffic access
 4 min by bus from JR Nanao Station
 (Get off at Sunlife Plaza and walk for one min.)
 4 min by taxi from JR Nanao Station



■ Hours
 9:00am~10:00pm
 Closed: Monday, national holidays, year-end and New Year's holidays (Dec. 29~Jan. 3)

■ Date to start accepting reservation
 Beginning of the month one year before the date of use



■ Accommodation
 None



■ Restaurants/Cafés
 None

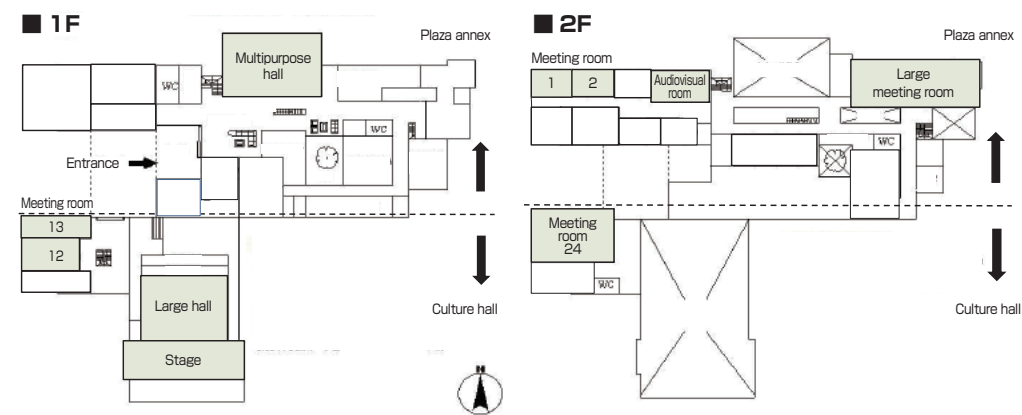


■ Parking
260 vehicles (free)



■ Remarks
 Library included

Floor plan



■ Convention site

Site name	Floor	Area(m ²)	Width × Depth (m)	Ceiling height(m)	Capacity (persons)					Remarks
					Fixed seats	School	Theater	Seated	Buffet	
Culture hall										
Large hall	1	—	—	7.0	990	—	—	—	—	
Meeting room 12	1	87	12.0 × 7.0	2.5	—	50	—	—	—	
Meeting room 13	1	67	7.5 × 9.5	2.5	—	30	—	—	—	
Meeting room 24	2	193	16.0 × 11.5	4.0	—	100	—	—	—	
Plaza annex										
Multipurpose hall	1	350	19.0 × 18.0	7.4	—	—	—	—	—	You can arrange the room layout freely with 50 tables and 300 chairs.
Audiovisual room	2	231	11.0 × 21.0	2.7	200	—	—	—	—	
Large meeting room	2	292	11.0 × 24.0	2.7	—	—	—	—	—	
Meeting room 1	2	57	9.0 × 6.0	2.7	—	30	—	—	—	
Meeting room 2	2	57	9.0 × 6.0	2.7	—	30	—	—	—	

Width × Depth and the floor area may not match depending on the shape of the room.

Nanao Nakajima Culture Center Noto Engekido Theater

Jobu-9 Nakajima, Nakajima-machi, Nanao
929-2222

Tel: 0767-66-2323

Fax: 0767-66-2326

URL: <https://www.engekido.com>

E-mail: engekido@nanaonet.jp



■ Number of seats

651 seats (Noto theater)



■ Traffic access

20-min walk from Noto Nakajima Station of Noto Railway
3-min drive from Yokota IC of Noto Satoyama Highway



■ Hours

9:00am~10:00pm
Closed: Monday, national holiday, year-end and New Year's holidays (Dec. 29~Jan. 3)

■ Date to start accepting reservation

Noto Theater: One year before the date of use
Workshop room: 3 months before the date of use



■ Accommodation

None



■ Restaurants/Cafés

• Buffet: 25 seats



■ Parking

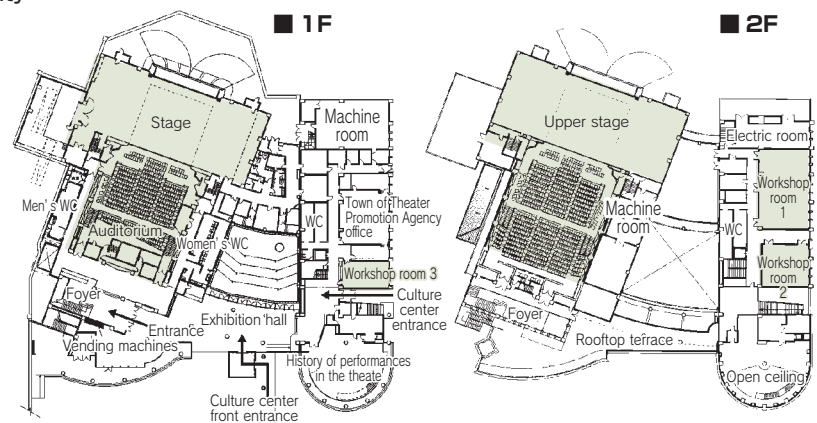
14 vehicles (free)
The adjoining parking lot of Nanao Community Center can be used (120 vehicles, free).



■ Remarks

Theater history exhibition area

Floor plan



■ Convention site

Site name	Floor	Area(m ²)	Width × Depth (m)	Ceiling height(m)	Capacity (persons)					Remarks
					Fixed seats	School	Theater	Seated	Buffet	
Noto Engekido Theater	1	—	—	—	651	—	—	—	—	
Workshop room1	2	170	17.0 × 10.0	2.9	—	80	—	—	—	
Workshop room2	2	90	9.6 × 9.3	2.9	—	30	—	—	—	
Workshop room3	1	58	5.8 × 10.0	2.9	—	15	—	—	—	

Width × Depth and the floor area may not match depending on the shape of the room.

Notoraku

1-14 Kashima, Ishizaki-machi, Nanao
 926-0178
 Tel: 0767-62-3131
 Fax: 0767-62-3842
 URL: <http://www.notoraku.co.jp/>
 E-mail: front@notoraku.co.jp



Applause



■ Number of seats
500 seats (Applause)



■ Traffic access
 5 min by bus from JR Wakura Onsen Station
 Free pickup bus (reservation required)



■ Hours
 9:00am~10:00pm

■ Date to start accepting reservation
 One year before the date of use



■ Accommodation
 • 171 rooms: 650 people



■ Restaurants/Cafés
 • Karaoke lounge "London Club": 80 seats
 • Lobby lounge "Marco Polo": 32 seats



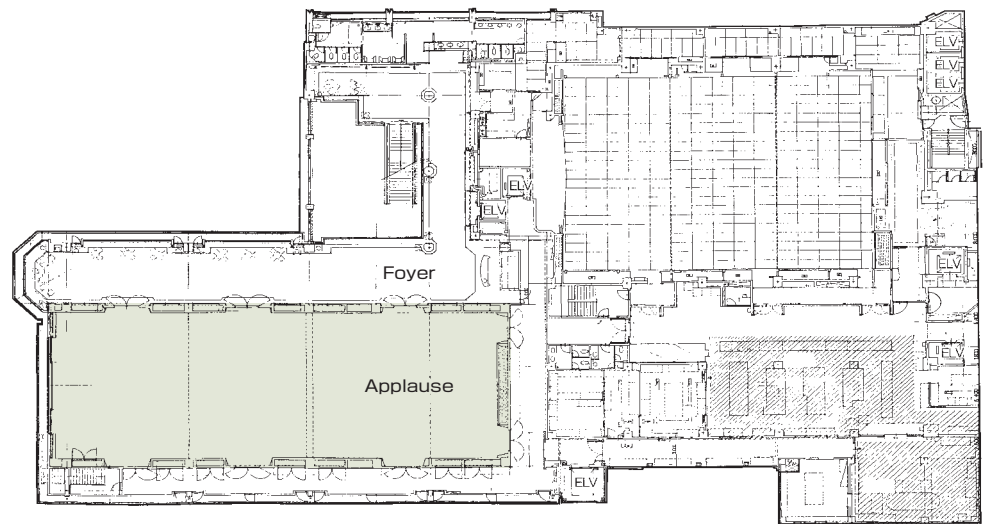
■ Parking
150 vehicles (free)



■ Remarks
 None

Floor plan

■ 2F



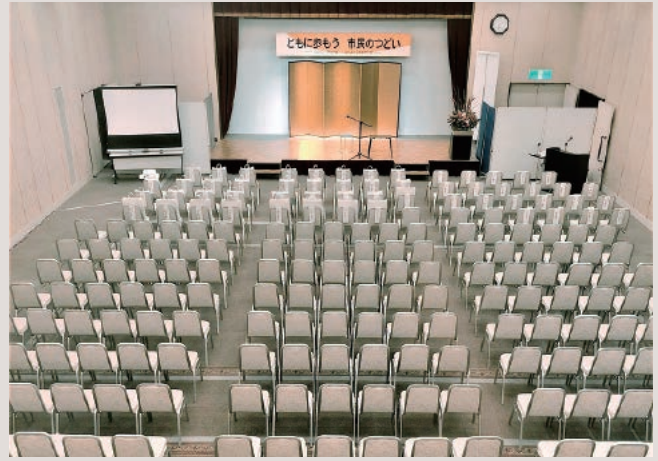
■ Convention site

Site name	Floor	Area(m ²)	Width × Depth (m)	Ceiling height(m)	Capacity (persons)					Remarks
					Fixed seats	School	Theater	Seated	Buffet	
Applause	2	550	35.0 × 14.0	7.0	—	500	700	250	600	The space can be partitioned into three rooms.

Width × Depth and the floor area may not match depending on the shape of the room.

Forum Nanao

1 Misogi-cho, Nanao 926-0811
 (4F and 5F of Patria Bldg.)
 Tel: 0767-52-5222 Fax: 0767-52-5239
 E-mail: forum770@soseinanao.com



Multipurpose hall



■ Number of seats
250 seats (Multipurpose hall)



■ Traffic access
 1 min walk from JR Nanao Station



■ Hours
 10:00am~8:30pm
 Closed: Wednesday and national holidays

■ Date to start accepting reservation
 One year before the date of use



■ Accommodation
 None



■ Restaurants/Cafés
 None

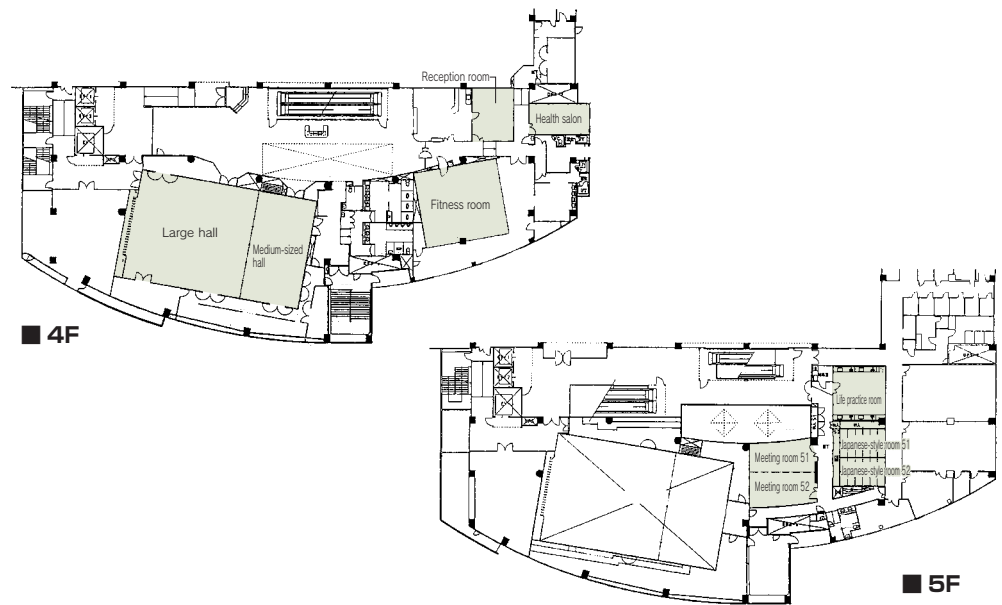


■ Parking
467 vehicles
 (Free for 3hrs)



■ Remarks
 Wi-Fi accessible

Floor plan



■ Convention site

Site name	Floor	Area(m ²)	Width × Depth (m)	Ceiling height(m)	Capacity (persons)					Remarks
					Fixed seats	School	Theater	Seated	Buffet	
Multipurpose hall	4	273	21.0 × 13.0		250	-	-	-	-	The space can be partitioned into two rooms. (Large hall, Medium-sized hall)
Fitness room	4	190			30	-	-	-	-	
Health salon	4	28			10	-	-	-	-	
Meeting room/ reception room	4	32			10	-	-	-	-	
Meeting rooms (51, 52)	5	63			36	-	-	-	-	The space can be partitioned into two rooms.
Japanese-style rooms (51, 52)	5	50			40	-	-	-	-	The space can be partitioned into two rooms.
Life practice room	5	42			20	-	-	-	-	Cooking room

Width × Depth and the floor area may not match depending on the shape of the room.

Wakura Onsen Omatsuri Hall

2-13-1 Wakura-machi, Nanao 926-0175

Tel: 0767-62-4332

Fax: 0767-62-0901



Large meeting room



■ Number of seats

150 seats (Large meeting room)



■ Traffic access

5 min by bus from JR Wakura Onsen Station (Get off at Wakura Onsen Omatsuri Hall-mae)

5 min by taxi from JR Wakura Onsen Station

20-min walk from JR Wakura Onsen Station

5-min drive from Wakura IC of Nanao Tsuruhama Bypass (Get off Noto Satoyama Highway at Tokuda Otsu JCT, take Tsuruhama Highway (Nanao City) and the Bypass).



■ Hours

9:00am~6:00pm

Note:

The hall may be closed temporarily due to equipment inspection or repair.

■ Date to start accepting reservation

Five days before the date of use



■ Accommodation

None



■ Restaurants/Cafés

Souvenir area (No restaurant)



■ Parking

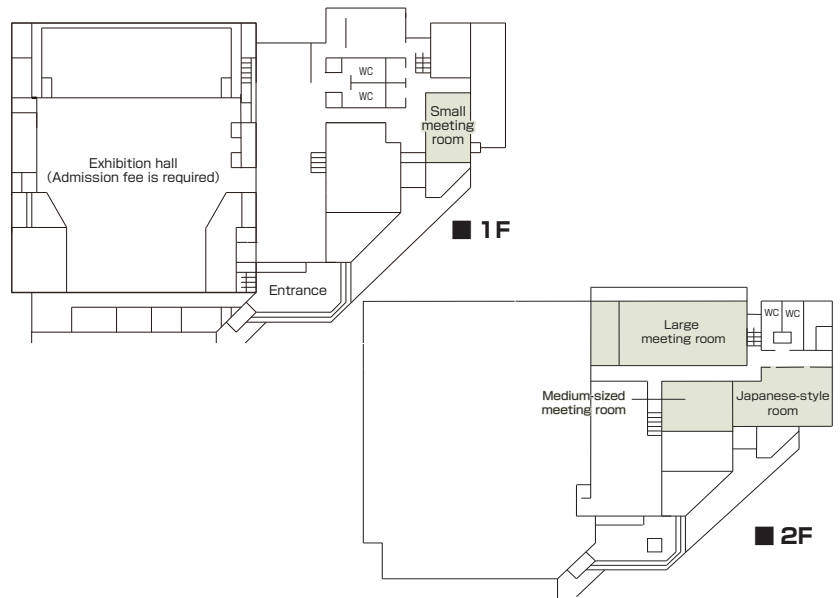
94 vehicles
(incl. 5 large vehicles)



■ Remarks

AED

Floor plan



■ Convention site

Site name	Floor	Area(m ²)	Width × Depth (m)	Ceiling height(m)	Capacity (persons)					Remarks
					Fixed seats	School	Theater	Seated	Buffet	
Large meeting room	2	190	22 × 10	3.1	—	100	150	—	—	With a simple stage, screen, partitions for dividing the space into two rooms
Japanese-style room	2	60-tatami-mat	16 × 7.5	2.7	—	40	80	—	—	Floor cushion and low table The space can be partitioned into two rooms.
Medium-sized meeting room	2	82.5	11 × 7.5	2.7	—	20	40	—	—	The space can be partitioned into two rooms.
Small meeting room	1	70	10 × 7	2.7	14	—	—	—	—	Table layout is fixed.

Width × Depth and the floor area may not match depending on the shape of the room.

National Tangible Cultural Property

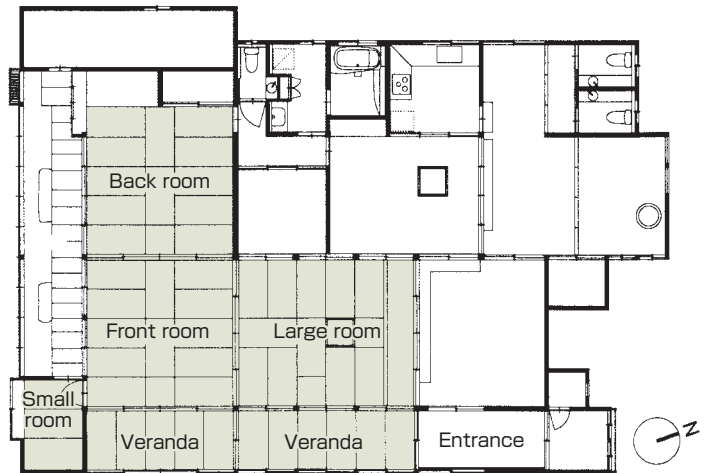
Traditional house, Mioya-no-sato

Mu-103 Kodanaka, Nakanoto-machi, Kashima
 929-1632
 Tel: 0767-74-2806
 Fax: 0767-74-1300
 URL: https://www.town.nakanoto.ishikawa.jp/life_service_local/3/1/2354.html



Large room

Floor plan



■ Number of seats
85 seats



■ Traffic access
 20-min drive from Yanagida IC of Noto Satoyama Highway
 8 min by taxi from JR Notoke Station
 1-min walk from Kodanaka bus stop of Hokuriku Railroad Noto Bus



■ Hours
 9:00am~10:00pm

■ Date to start accepting reservation



■ Accommodation
 None



■ Restaurants/Cafés
 None
 * We will provide information about catering service if necessary.



■ Parking
 • **15** vehicles (free)



■ Remarks
 Reservation required

■ Convention site

Site name	Floor	Area(m ²)	Width × Depth (m) (m)	Ceiling height(m)	Capacity (persons)					Remarks
					Fixed seats	School	Theater	Seated	Buffet	
Large room	—	20.7	3.9 × 4.3	5.0	20	—	—	—	—	
Front room	—	20.7	3.9 × 3.6	3.0	20	—	—	—	—	
Back room	—	20.7	3.6 × 3.6	3.0	20	—	—	—	—	
Veranda	—	9.9	2.2 × 4.0	2.5	10	—	—	—	—	
Veranda	—	9.9	2.2 × 4.0	2.5	10	—	—	—	—	
Small room	—	5.0	1.6 × 1.8	2.0	5	—	—	—	—	

Width × Depth and the floor area may not match depending on the shape of the room.

Iko no Mura Noto Hanto

Shikanosato Onsen, Shika-machi, Hakui
 925-0165
 Tel: 0767-32-3131
 Fax: 0767-32-3134
 URL: <http://www.noto-ikoinomura.com>
 E-mail: info@noto-ikoinomura.com



Meeting room "Shika"



■ Number of seats
200 seats (Large hall "Toki")



■ Traffic access
 25 min by bus from JR Hakui Station
 (Get off at Takahama bus terminal and take a taxi (5 min).)
 You can call for a pickup bus.



■ Hours
 9:00am~ 9:00pm

■ Date to start accepting reservation
 Six months before the date of use



■ Accommodation
 185 people, 42 guest rooms (with TV, refrigerator, washroom and Wi-Fi)



■ Restaurants/Cafés

- Large banquet room (1 room) : 160-tatami-mat
- Medium-sized banquet hall (3 rooms): 27~ 65-tatami-mat
- Restaurant "Hana" (1 room): 110 seats
- Barbeque salon: 100 seats
- Snack "Nova": 40 seats
- Private restaurant "Hyakka": 9 rooms



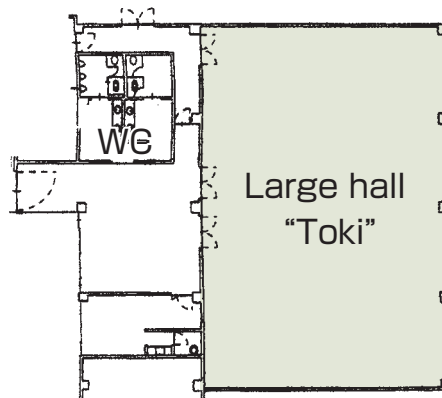
■ Parking
 200 vehicles (free)



■ Remarks
 Wi-Fi is accessible in large halls "Toki" and "Shika".

Floor plan

■ 1F



■ Convention site

Site name	Floor	Area(m ²)	Width × Depth (m)	Ceiling height(m)	Capacity (persons)					Remarks
					Fixed seats	School	Theater	Seated	Buffet	
Large hall "Toki"	1	282	20.7 × 13.6	3.6	—	200	—	120	150	
Shika	1	212	18.3 × 11.6	3.0	—	100	—	90	110	
Takahama	1	89	14.7 × 6.1	2.9	—	50	—	—	—	
Hakui	2	166	19.1 × 8.7	3.2	—	80	—	70	90	

Width × Depth and the floor area may not match depending on the shape of the room.

Shikamachi Togi Regional Development Center

Kou-10 Togiryoke-machi, Shika-machi, Hakui
 925-0498
 Tel: 0767-42-0500
 Fax: 0767-42-2858



Large hall



■ Number of seats
530 seats (Large hall)



■ Traffic access
 63 min by bus from JR Hakui Station (Express bus: 55 min) (Get off at Togi Bus Terminal and walk for 10 min.)



■ Hours
 9:00am~10:00pm
 Closed: Year-end and New Year's holidays (Dec. 29~Jan. 3)

■ Date to start accepting reservation
 From one month to seven days before the date of use



■ Accommodation
 None



■ Restaurants/Cafés
 None



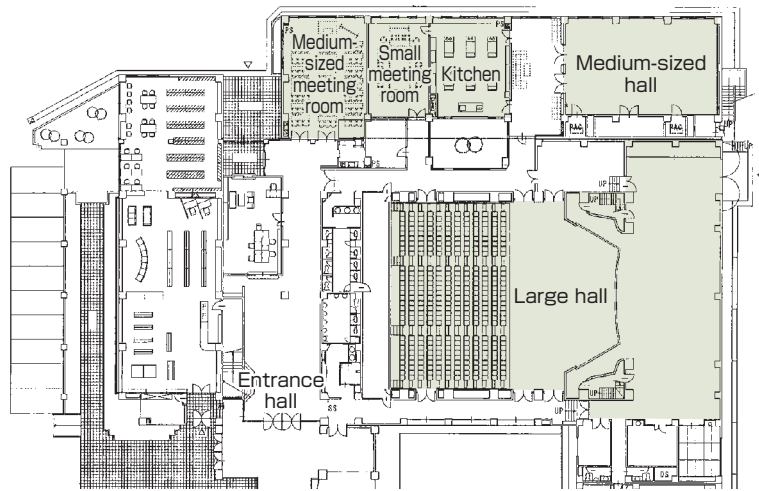
■ Parking
 211 vehicles (free)



■ Remarks
 Town office and library co-located

Floor plan

■ 1F



■ Convention site

Site name	Floor	Area(m ²)	Width × Depth (m) (m)	Ceiling height(m)	Capacity (persons)					Remarks
					Fixed seats	School	Theater	Seated	Buffet	
Large hall	1	365	—	—	—	—	530	—	—	390 movable seats, 320-inch (16:9) electric screen
Medium-sized hall	1			4.7	—	90	154	—	—	120-inch (4:3) electric screen
Medium-sized meeting room	1			3.0	—	63	—	—	—	100-inch (4:3) electric screen
Small meeting room	1			3.0	22	—	—	—	—	
Kitchen	1			3.0	—	—	—	—	—	
Workshop room 1 (Japanese-style)	2	12-tatami-mat	3.3 × 6.2	2.7	—	—	—	—	—	
Workshop room 2 (Japanese-style)	2	12-tatami-mat	3.3 × 6.2	2.7	—	—	—	—	—	
Workshop room 4 (Japanese-style)	2	12-tatami-mat	9.6 × 5.0	2.7	—	—	—	—	—	

Width × Depth and the floor area may not match depending on the shape of the room.

Royal Hotel Noto

Ra-1 Yaguradani, Shika-machi, Hakui
 925-0156
 Tel: 0767-32-3111
 Fax: 0767-32-3120
 URL: <https://www.daiwaresort.jp/noto/>
 E-mail: noto@daiwaresort.co.jp



Royal Hall (1/3)



■ Number of seats
600 seats (Royal Hall)



■ Traffic access
 75 min by express bus from JR Kanazawa Station
 (Get off at Takahama and take a taxi (5min).)
 25 min by taxi from Hakui Station of JR Nanao Line.
 50 min by taxi from Noto Satoyama Airport
 110 min by taxi from Komatsu Airport



■ Hours
 8:00am~10:00pm
 Open year-round

■ Date to start accepting reservation
 At any time



■ Accommodation
 • Western-style room (capacity: 4): 167
 • Japanese-style room (capacity: 4): 38
 • Other room: 29
 Total: 234 rooms, 571 people



■ Restaurants/Cafés
 • Restaurant "Sakura": 120 seats
 • Japanese restaurant "Ajinoren": 40 seats
 • Karaoke pub "Muse": 50 seats



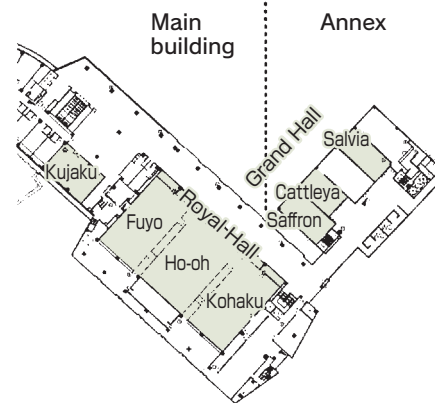
■ Parking
300 vehicles (free)



■ Remarks
 None

Floor plan

■ 2F



■ Convention site

Site name	Floor	Area(m ²)	Width × Depth (m)	Ceiling height(m)	Capacity (persons)					Remarks
					Fixed seats	School	Theater	Seated	Buffet	
Royal Hall	2	1,015	21.2 × 42.0	5.6	—	600	1,300	600	1,050	The space can be partitioned into three rooms.
Fuyo	2	340	21.2 × ^{11.6} / _{13.6}	5.6	—	200	350	200	350	
Ho-oh	2	340	21.2 × 14.2	5.6	—	200	500	200	350	With a stage
Kohaku	2	340	21.2 × ^{11.9} / _{14.0}	5.6	—	200	350	200	350	
Grand Hall	2	187	13.8 × 7.5	2.6	—	85	140	85	130	The space can be partitioned into two rooms.
Saffron	2	102	13.8 × 7.3	2.6	—	50	80	50	80	
Cattleya	2	85	10.8 × 7.5	2.6	—	35	60	35	50	
Salvia	2	95	13.7 × 6.9	2.6	—	50	80	40	70	
Kujaku	2	40	13.5 × 8.6	3.0	—	32	50	24	50	The space can be partitioned into two rooms.

Width × Depth and the floor area may not match depending on the shape of the room.

Space Science Museum Cosmo Isle Hakui

25 Menda, Tsuruta-machi, Hakui 925-0027

Tel: 0767-22-9888

Fax: 0767-22-1947

URL: <http://www.hakui.ne.jp/ufo/>



Large hall "Euphony Hall"



■ Number of seats

896 seats (Large hall "Euphony Hall")



■ Traffic access

8-min walk from JR Hakui Station East Exit
Near the Gokokudaka intersection on Route 286



■ Hours

Rental facility: 9:00am~10:00pm
Space science museum: 8:30am~5:00pm

■ Date to start accepting reservation

Large hall: One year before the date of use
Other hall and rooms: Six months before the date of use



■ Accommodation

None



■ Restaurants/Cafés

• Snack, coffee and drinks are served at the museum shop.



■ Parking

250 vehicles (incl. 6 large vehicles) (free)



■ Remarks

A grand piano, Bösendorfer Imperial (Model 290) is provided.

Parent and child seats: 12

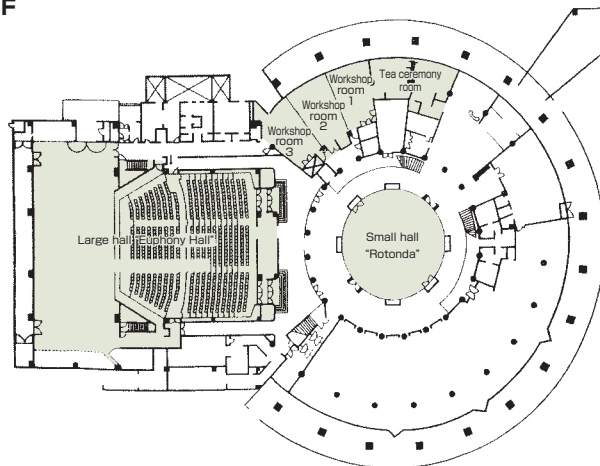
Proscenium type hall with good acoustics

The stage has large wings and can be used for various types of performance such as folk dance or piano recitals.

This facility, located halfway between Kanazawa and Noto, can be used before or after staying in Wakura or Wajima.

Floor plan

■ 1F



■ Convention site

Site name	Floor	Area(m ²)	Width × Depth (m) (m)	Ceiling height(m)	Capacity (persons)					Remarks
					Fixed seats	School	Theater	Seated	Buffet	
Large hall "Euphony Hall"	1	468	Width 15.8	8.0	896	-	-	-	-	
Small hall "Rotonda"	1	241	Diameter 17.0	8.0	-	-	250	-	-	
Workshop room	1	186	Width 1.6	3.3	-	75	-	-	-	The space can be partitioned into three rooms.
Tea ceremony room	1	85	Width 1.7	2.4	-	-	-	-	-	

Width × Depth and the floor area may not match depending on the shape of the room.

AMANDAN VILLA

Tora-25 Hachibuse, Kahoku 929-1117
 Tel: 076-283-7799 Fax: 076-283-7798
 URL: <http://restaurant.novarese.co.jp/avl>
 E-mail: r-avl@novarese.co.jp



Main dining



■ Number of seats
100 seats (Main dining)



■ Traffic access
 5-min drive from Unoke Station of JR Nanao Line.



■ Hours
 Please consult us about your event.

■ Date to start accepting reservation
 Please consult us about your event.



■ Accommodation
 None



■ Restaurants/Cafés
 Available

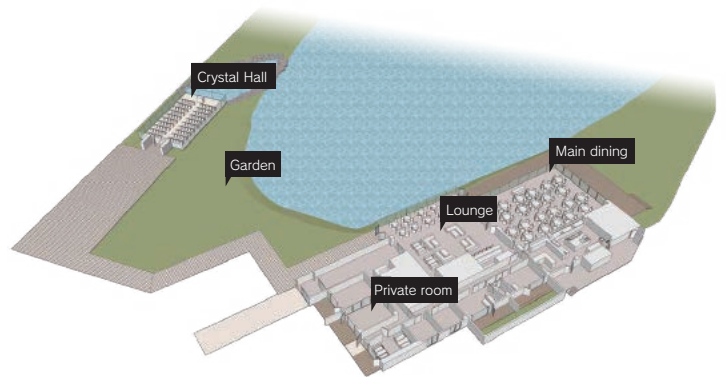


■ Parking
 • 70 vehicles



■ Remarks

Floor plan



■ Convention site

Site name	Floor	Area(m ²)	Width × Depth (m) (m)	Ceiling height(m)	Capacity (persons)					Remarks
					Fixed seats	School	Theater	Seated	Buffet	
Main dining	1	201.3	11.5 × 17.5	8.5	—	100	100	120	200	
Private room	1	46.1		2.8	—	—	—	12	—	
Crystal Hall	1	126		4.5	—	80	—	—	—	
Lounge	1	181.9		8	—	—	—	30	50	

Width × Depth and the floor area may not match depending on the shape of the room.

NISHIDA KITARO Museum of Philosophy

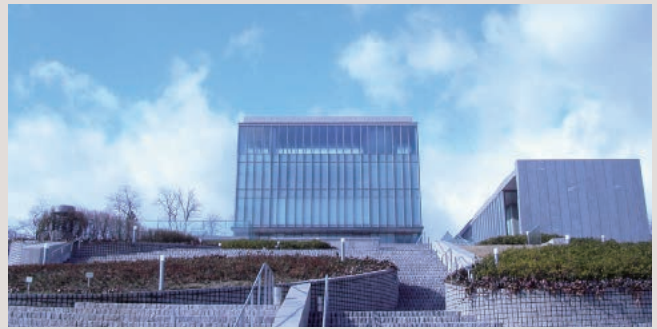
I-1 Uchihisumi, Kahoku 929-1 126

Tel: 076-283-6600

Fax: 076-283-6320

URL: <http://www.nishidatetsugakukan.org/>

E-mail: nishida-museum@city.kahoku.lg.jp



Hall



3F workshop room



4F workshop room



■ Number of seats

303 seats (Hall)



■ Traffic access

20-min walk from Unoke Station of JR Nanao Line
20-min drive from Kanazawa-higashi IC of Hokuriku Expressway
5-min drive from Shiroy IC of Noto Satoyama Highway



■ Hours

9:00am~10:00pm
Closed: Monday (the following weekday when Monday is a holiday), year-end and New Year's holidays and maintenance period

■ Date to start accepting reservation

· From three months to 10 days before the date of use



■ Accommodation

None



■ Restaurants/Cafés

· Coffee shop "Teoria":
14 seats

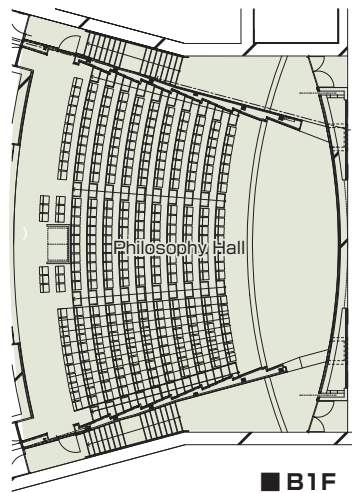


■ Parking

65 vehicles



■ Remarks



■ B1F

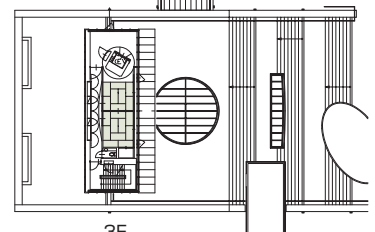
Floor plan

■ 3F



■ 4F

4F workshop room



3F workshop room (Japanese style)

■ Convention site

Site name	Floor	Area(m ²)	Width × Depth (m)	Ceiling height(m)	Capacity (persons)				Remarks	
					Fixed seats	School	Theater	Seated		Buffet
Philosophy Hall	B1	302		5	303					Stage: 62m ² , Auditorium: 240m ²
4F workshop room	4	55		2.5						Tables and chairs (40 chairs)
3F workshop room (Japanese style)	3	40		2.5						

Width × Depth and the floor area may not match depending on the shape of the room.

Tsubata Town Cultural Hall "CYGNUS"

3-1 Kita-chujo, Tsubata-machi, Kahoku 929-0342

Tel: 076-288-8526

Fax: 076-288-8527

URL: <http://www.town.tsubata.ishikawa.jp/shisetsu/cygnus/>

E-mail: shougaiyouiku@town.tsubata.lg.jp



Hall



Number of seats

802 seats (Hall)

(Fixed seat: 784, Wheelchair space: 12, Parent and child seat: 6)



Traffic access

10 min walk from Tsubata Station of Ishikawa Railway and JR Nanao Line
10 min drive from Kanazawa-higashi IC of Hokuriku Expressway



Hours

9:00am~ 9:30pm

Closed: Monday (the following weekday when Monday is a holiday), year-end and New Year's holidays (Dec. 28~Jan. 4)

Date to start accepting reservation

Hall: One year before the date of use

Rehearsal room or performer's waiting room only:

One month before the date of use

Other rooms: Beginning of the month three months before the date of use

Floor plan



Accommodation

None



Restaurants/Cafés

• Coffee shop "Cygnus":
14 seats



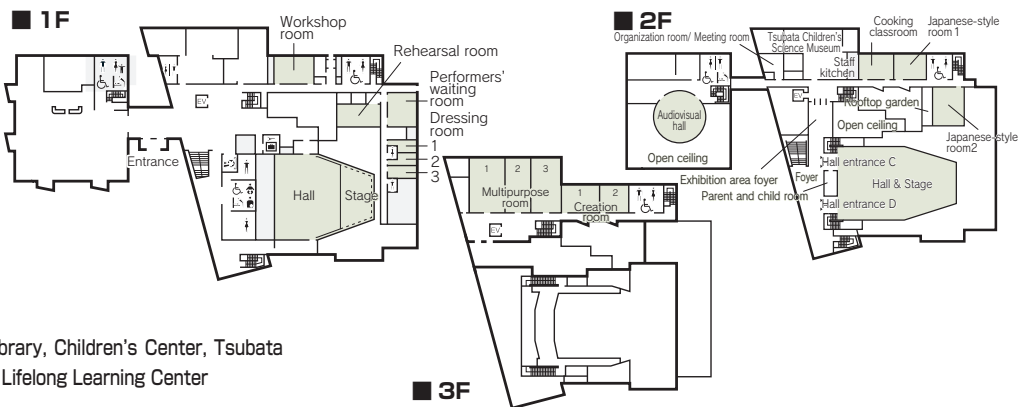
Parking

180 vehicles (free)



Remarks

Complex including the town's library, Children's Center, Tsubata Children's Science Museum and Lifelong Learning Center



Convention site

Site name	Floor	Area(m ²)	Width × Depth (m)	Ceiling height(m)	Capacity (persons)					Remarks
					Fixed seats	School	Theater	Seated	Buffet	
Hall	1,2		17.6 × 10.2	10.8	784	—	—	—	—	Wheelchair space: 12, Parent and child room: 6
Audiovisual hall	2	76	15 × 15	7	150	150	150	—	—	With a small stage, a projector, acoustic system and a lectern
Dressing room1	1	13	2.6 × 5	2.8	—	—	—	6	6	Western-style room
Dressing room2	1	13	2.6 × 5	2.8	—	—	—	6	6	Western-style room
Dressing room3	1	13	2.6 × 5	2.8	—	—	—	6	6	Japanese-style room with shower
Rehearsal room	1	83	7.5 × 11	2.8	—	36	60	36	60	Noise insulation, upright piano, acoustic system
Performers' waiting room	1	75	7 × 11	6	—	30	60	30	60	Two mirror walls (with handrail), upright piano, acoustic system
Workshop room	1	76	7.5 × 10	2.8	—	30	50	30	50	Provided with a projector
Japanese-style room 1	2	50	4.5 × 11	2.6	—	32	50	32	50	
Japanese-style room 2	2	50	4.5 × 11	2.5	—	20	40	20	40	Tea ceremony room with the preparation area and a Japanese garden
Cooking room	2	73	7.3 × 10	2.8	36	36	—	36	70	Gas cooking stove (6), IH cooking equipment (1), oven & microwave, rice cooker, etc.
Multipurpose room 1	3	140	9.3 × 13.6	4.8	—	60	100	60	100	
Multipurpose room 2	3	100	6.8 × 13.6	4.8	—	60	80	60	80	Multipurpose room 1~3 can be integrated into one space. A projector and acoustic system are furnished in Multipurpose room 1.
Multipurpose room 3	3	100	7.3 × 13.6	4.8	—	60	80	60	80	
Creation room 1	3	53	6.5 × 8	2.8	16	16	30	—	—	Worktable for 4 persons: 4
Creation room 2	3	53	6.5 × 8	2.8	24	24	30	—	—	Worktable for 4 persons: 6, electric furnace, potter's wheel

Width × Depth and the floor area may not match depending on the shape of the room.

Uchinada Town Cultural Hall

140 Taiseidai, Uchinada-machi, Kahoku
 920-0267
 Tel: 076-286-1123
 Fax: 076-286-1132



Large hall



■ Number of seats
1000 seats (Large hall)



■ Traffic access
 7 min by bus (for Ikadaigaku) from Uchinada Station of Asanogawa Line, Hokuriku Railroad (Get off at Taiseidai and walk for one min.)



■ Hours
 9:00am~10:00pm
 Closed: Monday

■ Date to start accepting reservation
 One year before the date of use



■ Accommodation
 None



■ Restaurants/Cafés
 None



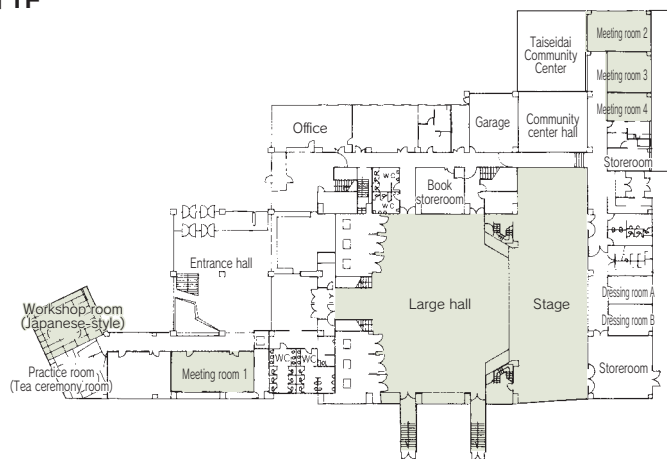
■ Parking
85 vehicles (free)



■ Remarks
 None

Floor plan

■ 1F



■ Convention site

Site name	Floor	Area(m ²)	Width × Depth (m)	Ceiling height(m)	Capacity (persons)					Remarks
					Fixed seats	School	Theater	Seated	Buffet	
Large hall	-	1,118		8.6	-	-	1000	-	-	Fixed seats: 366, Movable seats: 634
Meeting room 1	1	57		3.1	-	30	-	-	-	
Meeting room 2	1	47			-	21	-	-	-	
Meeting room 3	1	33			-	21	-	-	-	
Meeting room 4	1	23			-	12	-	-	-	
Japanese-style workshop room	1	63		2.7	-	55	-	-	-	
Multipurpose room	3	266		2.8	-	-	200	-	-	

Width × Depth and the floor area may not match depending on the shape of the room.

<https://www.kanazawa-cb.com>